

TTLL12 (5S1) Mouse Monoclonal antibody

TTLL12 (5S1) Mouse Monoclonal antibody

Catalog # AP93879

Product Information

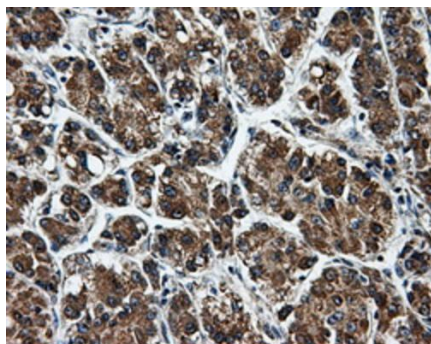
| | |
|-------------------|------------------------|
| Application | WB, IHC |
| Primary Accession | Q14166 |
| Reactivity | Rat, Human, Mouse |
| Clonality | Monoclonal |
| Calculated MW | 74404 |

Additional Information

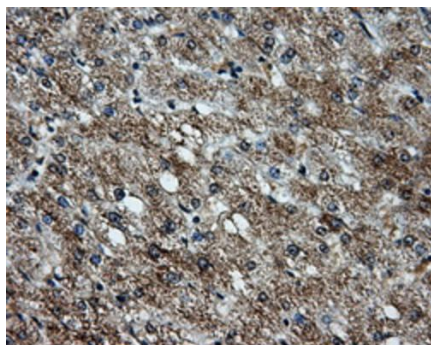
| | |
|--------------------|---|
| Gene ID | 23170 |
| Other Names | Tubulin--tyrosine ligase-like protein 12, Inactive tubulin--tyrosine ligase-like protein 12, TTLL12, KIAA0153 |
| Dilution | WB~~1:1000 IHC~~1:100~500 |
| Storage Conditions | -20°C |

Protein Information

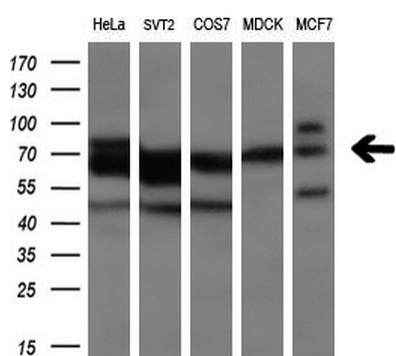
| | |
|-------------------|---|
| Name | TTLL12 |
| Synonyms | KIAA0153 |
| Function | Negatively regulates post-translational modifications of tubulin, including detyrosination of the C-terminus and polyglutamylation of glutamate residues (PubMed: 20162578 , PubMed: 23251473). Also, indirectly promotes histone H4 trimethylation at 'Lys-20' (H4K20me3) (PubMed: 23251473). Probably by controlling tubulin and/or histone H4 post-translational modifications, plays a role in mitosis and in maintaining chromosome number stability (PubMed: 20162578 , PubMed: 23251473). During RNA virus-mediated infection, acts as a negative regulator of the RIG-I pathway by preventing MAVS binding to TBK1 and IKKε (PubMed: 28011935). |
| Cellular Location | Cytoplasm. Midbody Cytoplasm, cytoskeleton, microtubule organizing center, centrosome. Cytoplasm, cytoskeleton, spindle. Nucleus Note=Predominantly localizes in the cytoplasm (PubMed:28011935) Partially colocalizes with vimentin in prostate cancer cells (PubMed:20162578). |
| Tissue Location | Expressed in the basal layer of prostate and endothelial cells. Increased expression in prostatic intraepithelial neoplasia and metastatic lesions. |



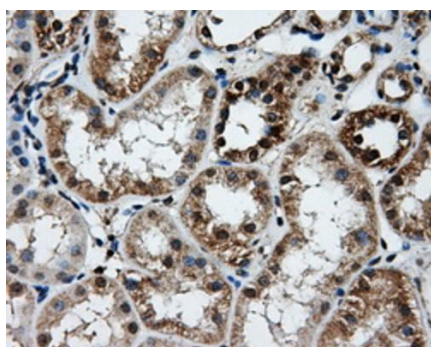
Immunohistochemical staining of paraffin-embedded Carcinoma of liver tissue using anti-TTLL12 mouse monoclonal antibody. (Heat-induced epitope retrieval by 10mM citric buffer, pH6.0, 100°C for 10min, AP93879, Dilution 1:50)



Immunohistochemical staining of paraffin-embedded liver tissue within the normal limits using anti-TTLL12 mouse monoclonal antibody. (Heat-induced epitope retrieval by 10mM citric buffer, pH6.0, 100°C for 10min, AP93879, Dilution 1:50)

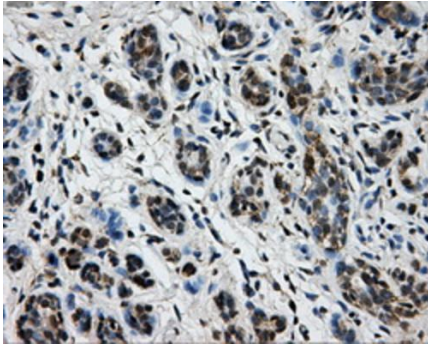
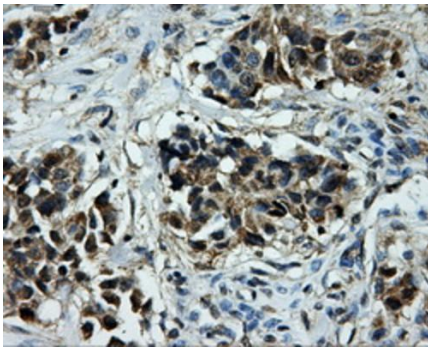


Western blot analysis of extracts (10ug) from 5 different cell lines by using anti-TTLL12 monoclonal antibody (1:200).

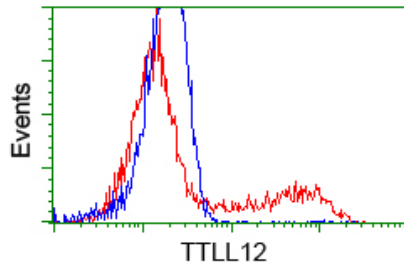


Immunohistochemical staining of paraffin-embedded Kidney tissue within the normal limits using anti-TTLL12 mouse monoclonal antibody. (Heat-induced epitope retrieval by 10mM citric buffer, pH6.0, 100°C for 10min, AP93879, Dilution 1:50)

Immunohistochemical staining of paraffin-embedded Adenocarcinoma of breast tissue using anti-TTLL12 mouse monoclonal antibody. (Heat-induced epitope retrieval by 10mM citric buffer, pH6.0, 100°C for 10min, AP93879, Dilution 1:50)



Immunohistochemical staining of paraffin-embedded breast tissue within the normal limits using anti-TTLL12 mouse monoclonal antibody. (Heat-induced epitope retrieval by 10mM citric buffer, pH6.0, 100°C for 10min, AP93879, Dilution 1:50)



HEK293T cells transfected with either pCMV6-ENTRY TTLL12 (Red) or empty vector control plasmid (Blue) were immunostained with anti-TTLL12 mouse monoclonal (AP93879), and then analyzed by flow cytometry.

Please note: All products are 'FOR RESEARCH USE ONLY. NOT FOR USE IN DIAGNOSTIC OR THERAPEUTIC PROCEDURES'.