

TTLL12 (11R19) Mouse Monoclonal antibody

TTLL12 (11R19) Mouse Monoclonal antibody

Catalog # AP93878

Product Information

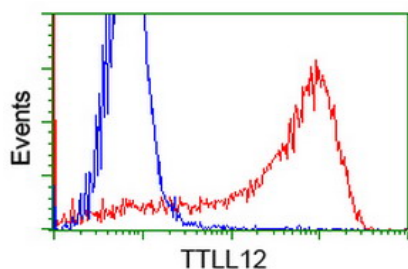
Application	WB, IHC, IF
Primary Accession	Q14166
Reactivity	Rat, Human, Mouse, Monkey, Dog
Clonality	Monoclonal
Calculated MW	74404

Additional Information

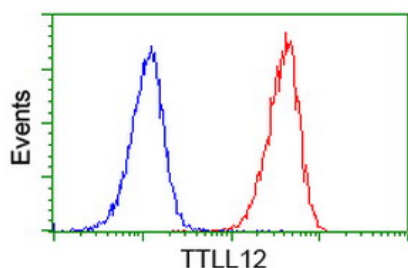
Gene ID	23170
Other Names	Tubulin--tyrosine ligase-like protein 12, Inactive tubulin--tyrosine ligase-like protein 12, TTLL12, KIAA0153
Dilution	WB~~1:1000 IHC~~1:100~500 IF~~1:50~200
Storage Conditions	-20°C

Protein Information

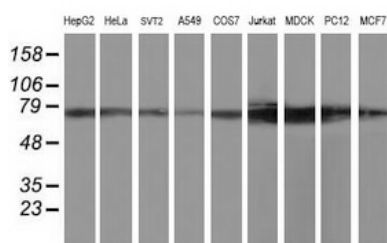
Name	TTLL12
Synonyms	KIAA0153
Function	Negatively regulates post-translational modifications of tubulin, including detyrosination of the C-terminus and polyglutamylation of glutamate residues (PubMed: 20162578 , PubMed: 23251473). Also, indirectly promotes histone H4 trimethylation at 'Lys-20' (H4K20me3) (PubMed: 23251473). Probably by controlling tubulin and/or histone H4 post-translational modifications, plays a role in mitosis and in maintaining chromosome number stability (PubMed: 20162578 , PubMed: 23251473). During RNA virus-mediated infection, acts as a negative regulator of the RIG-I pathway by preventing MAVS binding to TBK1 and IKKε (PubMed: 28011935).
Cellular Location	Cytoplasm. Midbody Cytoplasm, cytoskeleton, microtubule organizing center, centrosome. Cytoplasm, cytoskeleton, spindle. Nucleus Note=Predominantly localizes in the cytoplasm (PubMed:28011935) Partially colocalizes with vimentin in prostate cancer cells (PubMed:20162578).
Tissue Location	Expressed in the basal layer of prostate and endothelial cells. Increased expression in prostatic intraepithelial neoplasia and metastatic lesions.



HEK293T cells transfected with either overexpress plasmid (Red) or empty vector control plasmid (Blue) were immunostained by anti-TTLL12 antibody (AP93878), and then analyzed by flow cytometry.



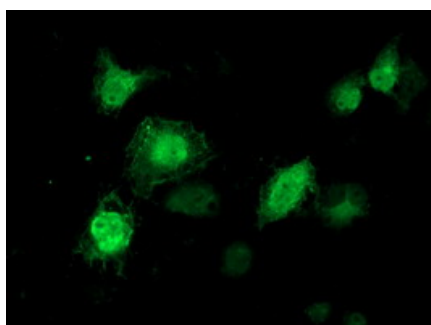
Flow cytometric Analysis of Jurkat cells, using anti-TTLL12 antibody (AP93878), (Red), compared to a nonspecific negative control antibody, (Blue).



Western blot analysis of extracts (35ug) from 9 different cell lines by using anti-TTLL12 monoclonal antibody.

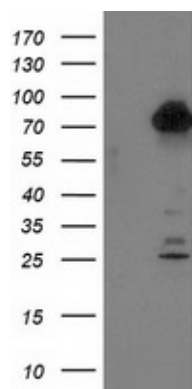
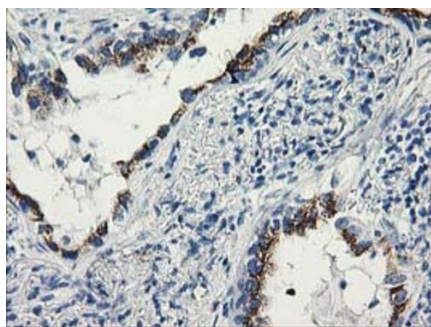


Immunohistochemical staining of paraffin-embedded Adenocarcinoma of Human colon tissue using anti-TTLL12 mouse monoclonal antibody. (Heat-induced epitope retrieval by 10mM citric buffer, pH6.0, 100°C for 10min, AP93878)



Anti-TTLL12 mouse monoclonal antibody (AP93878) immunofluorescent staining of COS7 cells transiently transfected by pCMV6-ENTRY TTLL12 .

Immunohistochemical staining of paraffin-embedded Carcinoma of Human lung tissue using anti-TTLL12 mouse monoclonal antibody. (Heat-induced epitope retrieval by 10mM citric buffer, pH6.0, 100°C for 10min, AP93878)



HEK293T cells were transfected with the pCMV6-ENTRY control (Left lane) or pCMV6-ENTRY TTLL12 (Right lane) cDNA for 48 hrs and lysed. Equivalent amounts of cell lysates (5 ug per lane) were separated by SDS-PAGE and immunoblotted with anti-TTLL12. Positive lysates (100ug) and (20ug) can be purchased separately from biodragon.

Please note: All products are 'FOR RESEARCH USE ONLY. NOT FOR USE IN DIAGNOSTIC OR THERAPEUTIC PROCEDURES'.