

SPCS2 (3Y14) Mouse Monoclonal antibody

SPCS2 (3Y14) Mouse Monoclonal antibody

Catalog # AP93877

Product Information

Application	WB
Primary Accession	Q15005
Reactivity	Rat, Human, Mouse
Clonality	Monoclonal
Calculated MW	25003

Additional Information

Gene ID	9789
Other Names	Signal peptidase complex subunit 2, Microsomal signal peptidase 25 kDa subunit, SPase 25 kDa subunit, SPCS2, KIAA0102, SPC25
Dilution	WB~~1:1000
Storage Conditions	-20°C

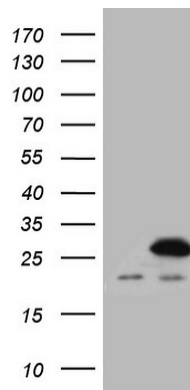
Protein Information

Name	SPCS2
Synonyms	KIAA0102, SPC25
Function	Component of the signal peptidase complex (SPC) which catalyzes the cleavage of N-terminal signal sequences from nascent proteins as they are translocated into the lumen of the endoplasmic reticulum (PubMed: 34388369). Enhances the enzymatic activity of SPC and facilitates the interactions between different components of the translocation site (By similarity).
Cellular Location	Endoplasmic reticulum membrane {ECO:0000250 UniProtKB:Q28250}; Multi-pass membrane protein {ECO:0000250 UniProtKB:Q28250}

Background

Component of the microsomal signal peptidase complex which removes signal peptides from nascent proteins as they are translocated into the lumen of the endoplasmic reticulum. [UniProtKB/Swiss-Prot Function]

Images



HEK293T cells were transfected with the pCMV6-ENTRY control (Left lane) or pCMV6-ENTRY SPCS2 (Right lane) cDNA for 48 hrs and lysed. Equivalent amounts of cell lysates (5 ug per lane) were separated by SDS-PAGE and immunoblotted with anti-SPCS2 (Cat# AP93877)(1:2000). Positive lysates (100ug) and (20ug) can be purchased separately from biodragon.

Please note: All products are 'FOR RESEARCH USE ONLY. NOT FOR USE IN DIAGNOSTIC OR THERAPEUTIC PROCEDURES'.