

# SCHIP1 (3X11) Mouse Monoclonal antibody

SCHIP1 (3X11) Mouse Monoclonal antibody

Catalog # AP93876

## Product Information

Application	WB, IF
Primary Accession	<a href="#">P0DPB3</a>
Reactivity	Human, Mouse
Clonality	Monoclonal
Calculated MW	53480

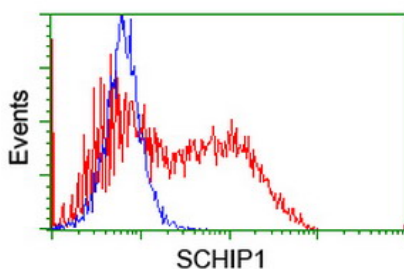
## Additional Information

Gene ID	29970
Other Names	Schwannomin-interacting protein 1 {ECO:0000312   HGNC:HGNC:15678}, SCHIP-1, SCHIP1 ( <a href="#">HGNC:15678</a> )
Dilution	WB~~1:1000 IF~~1:50~200
Storage Conditions	-20°C

## Protein Information

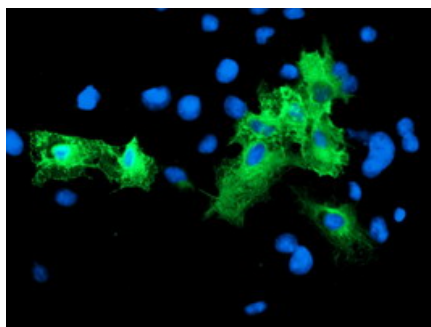
Name	SCHIP1 ( <a href="#">HGNC:15678</a> )
Cellular Location	Cytoplasm.
Tissue Location	Preferentially expressed in brain, skeletal muscles and heart. Also expressed in detected in pancreas, kidney, liver, lung, and placenta.

## Images

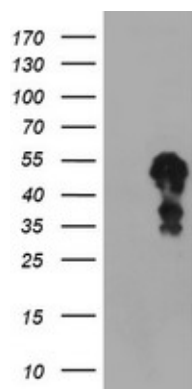


HEK293T cells transfected with either overexpress plasmid (Red) or empty vector control plasmid (Blue) were immunostained by anti-SCHIP1 antibody (AP93876), and then analyzed by flow cytometry.

Anti-SCHIP1 mouse monoclonal antibody (AP93876)



immunofluorescent staining of COS7 cells transiently transfected by pCMV6-ENTRY SCHIP1 .



HEK293T cells were transfected with the pCMV6-ENTRY control (Left lane) or pCMV6-ENTRY SCHIP1 (Right lane) cDNA for 48 hrs and lysed. Equivalent amounts of cell lysates (5 ug per lane) were separated by SDS-PAGE and immunoblotted with anti-SCHIP1. Positive lysates (100ug) and (20ug) can be purchased separately from biodragon.

Please note: All products are 'FOR RESEARCH USE ONLY. NOT FOR USE IN DIAGNOSTIC OR THERAPEUTIC PROCEDURES'.