

SCHIP1 (1S18) Mouse Monoclonal antibody

SCHIP1 (1S18) Mouse Monoclonal antibody

Catalog # AP93874

Product Information

Application	WB
Primary Accession	P0DPB3
Reactivity	Human, Mouse
Clonality	Monoclonal
Calculated MW	53480

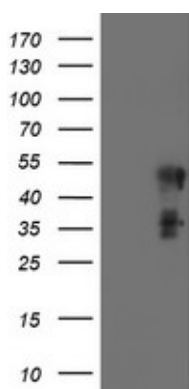
Additional Information

Gene ID	29970
Other Names	Schwannomin-interacting protein 1 {ECO:0000312 HGNC:HGNC:15678}, SCHIP-1, SCHIP1 (HGNC:15678)
Dilution	WB~~1:1000
Storage Conditions	-20°C

Protein Information

Name	SCHIP1 (HGNC:15678)
Cellular Location	Cytoplasm.
Tissue Location	Preferentially expressed in brain, skeletal muscles and heart. Also expressed in detected in pancreas, kidney, liver, lung, and placenta.

Images



HEK293T cells were transfected with the pCMV6-ENTRY control (Left lane) or pCMV6-ENTRY SCHIP1 (Right lane) cDNA for 48 hrs and lysed. Equivalent amounts of cell lysates (5 ug per lane) were separated by SDS-PAGE and immunoblotted with anti-SCHIP1. Positive lysates (100ug) and (20ug) can be purchased separately from biodragon.

Please note: All products are 'FOR RESEARCH USE ONLY. NOT FOR USE IN DIAGNOSTIC OR THERAPEUTIC PROCEDURES'.