

SSU72 (17R14) Mouse Monoclonal antibody

SSU72 (17R14) Mouse Monoclonal antibody

Catalog # AP93872

Product Information

Application	WB, IHC
Primary Accession	Q9NP77
Reactivity	Rat, Human, Mouse
Clonality	Monoclonal
Calculated MW	22574

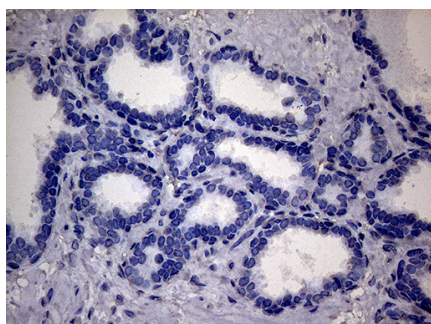
Additional Information

Gene ID	29101
Other Names	RNA polymerase II subunit A C-terminal domain phosphatase SSU72, CTD phosphatase SSU72, 3.1.3.16, SSU72
Dilution	WB~~1:1000 IHC~~1:100~500
Storage Conditions	-20°C

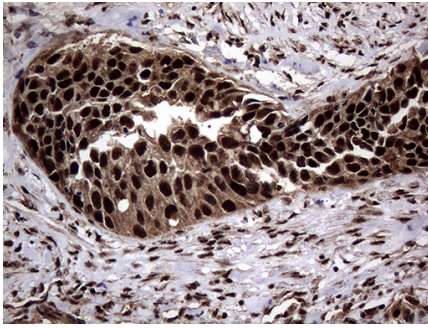
Protein Information

Name	SSU72
Function	Protein phosphatase that catalyzes the dephosphorylation of the C-terminal domain of RNA polymerase II. Plays a role in RNA processing and termination. Plays a role in pre-mRNA polyadenylation via its interaction with SYMPK.
Cellular Location	Nucleus. Cytoplasm. Note=Predominantly in the cytosol

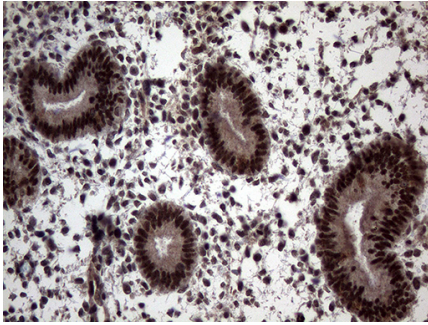
Images



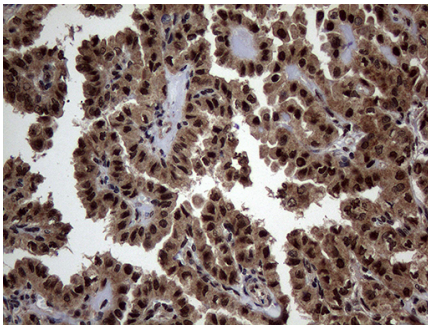
Immunohistochemical staining of paraffin-embedded Human prostate tissue within the normal limits using anti-SSU72 mouse monoclonal antibody. This figure shows negative staining. (Heat-induced epitope retrieval by 1mM EDTA in 10mM Tris buffer (pH8.5) at 120°C for 3min, AP93872) (1:500)



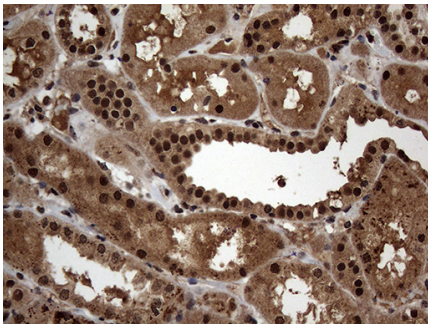
Immunohistochemical staining of paraffin-embedded Carcinoma of Human kidney tissue using anti-SSU72 mouse monoclonal antibody. (Heat-induced epitope retrieval by 1mM EDTA in 10mM Tris buffer (pH8.5) at 120°C for 3min, AP93872) (1:500)



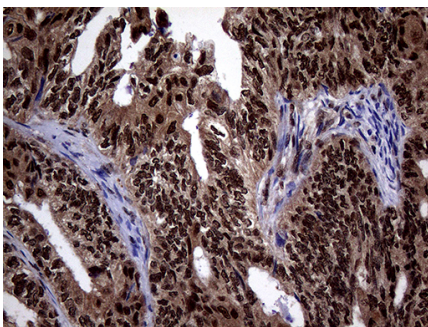
Immunohistochemical staining of paraffin-embedded Human endometrium tissue within the normal limits using anti-SSU72 mouse monoclonal antibody. (Heat-induced epitope retrieval by 1mM EDTA in 10mM Tris buffer (pH8.5) at 120°C for 3min, AP93872) (1:500)



Immunohistochemical staining of paraffin-embedded Carcinoma of Human thyroid tissue using anti-SSU72 mouse monoclonal antibody. (Heat-induced epitope retrieval by 1mM EDTA in 10mM Tris buffer (pH8.5) at 120°C for 3min, AP93872) (1:500)

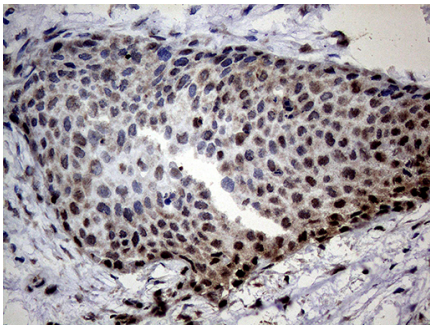


Immunohistochemical staining of paraffin-embedded Human Kidney tissue within the normal limits using anti-SSU72 mouse monoclonal antibody. (Heat-induced epitope retrieval by 1mM EDTA in 10mM Tris buffer (pH8.5) at 120°C for 3min, AP93872) (1:500)



Immunohistochemical staining of paraffin-embedded Adenocarcinoma of Human ovary tissue using anti-SSU72 mouse monoclonal antibody. (Heat-induced epitope retrieval by 1mM EDTA in 10mM Tris buffer (pH8.5) at 120°C for 3min, AP93872) (1:500)

Immunohistochemical staining of paraffin-embedded Carcinoma of Human bladder tissue using anti-SSU72 mouse monoclonal antibody. (Heat-induced epitope retrieval by 1mM EDTA in 10mM Tris buffer (pH8.5) at 120°C for 3min, AP93872) (1:500)



Please note: All products are 'FOR RESEARCH USE ONLY. NOT FOR USE IN DIAGNOSTIC OR THERAPEUTIC PROCEDURES'.