

# HDHD1 (5Z16) Mouse Monoclonal antibody

HDHD1 (5Z16) Mouse Monoclonal antibody  
Catalog # AP93866

## Product Information

---

|                   |                                |
|-------------------|--------------------------------|
| Application       | WB, IHC                        |
| Primary Accession | <a href="#">Q08623</a>         |
| Reactivity        | Rat, Human, Mouse, Monkey, Dog |
| Clonality         | Monoclonal                     |
| Calculated MW     | 25249                          |

## Additional Information

---

|                    |  |
|--------------------|--|
| Gene ID            | 8226   |
| Other Names        | Pseudouridine-5'-phosphatase {ECO:0000312   HGNC:HGNC:16818}, 3.1.3.96, Haloacid dehalogenase-like hydrolase domain-containing protein 1, Haloacid dehalogenase-like hydrolase domain-containing protein 1A, Protein GS1, Pseudouridine-5'-monophosphatase, 5'-PsiMPase, PUDP ( <a href="#">HGNC:16818</a> ) |
| Dilution           | WB~~1:1000 IHC~~1:100~500  |
| Storage Conditions | -20°C  |

## Protein Information

---

|          |  |
|----------|--|
| Name     | PUDP ( <a href="#">HGNC:16818</a> )  |
| Function | Dephosphorylates pseudouridine 5'-phosphate, a potential intermediate in rRNA degradation. Pseudouridine is then excreted intact in urine. |

## Background

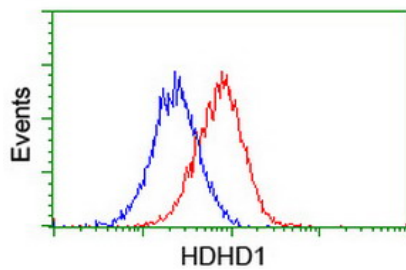
---

This gene encodes a member of the haloacid dehalogenase-like (HAD) hydrolase superfamily. The encoded protein has no known biological function. This gene has a pseudogene on chromosome 1. Multiple alternatively spliced transcript variants encoding different isoforms have been identified. [provided by RefSeq]

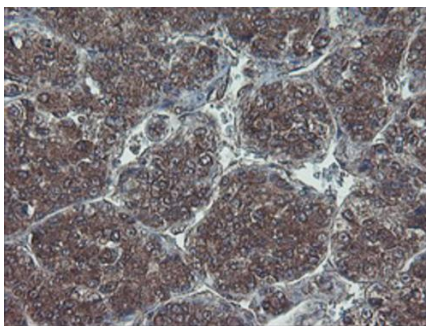
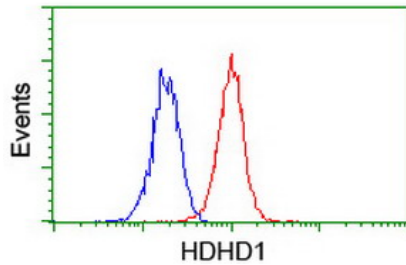
## Images

---

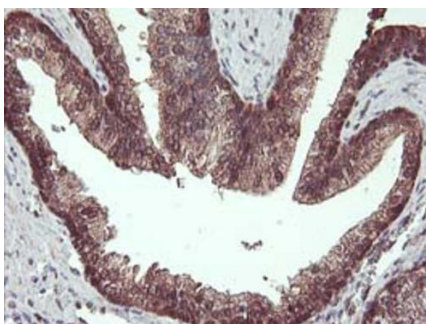
Flow cytometric Analysis of Hela cells, using anti-HDHD1 antibody (AP93866), (Red), compared to a nonspecific negative control antibody, (Blue).



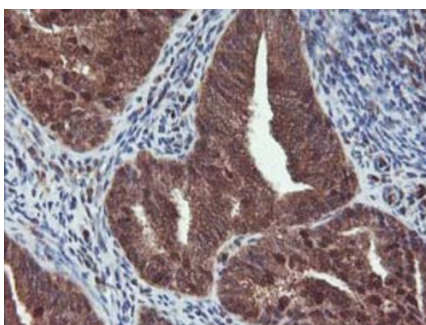
Flow cytometric Analysis of Jurkat cells, using anti-HDHD1 antibody (AP93866), (Red), compared to a nonspecific negative control antibody, (Blue).



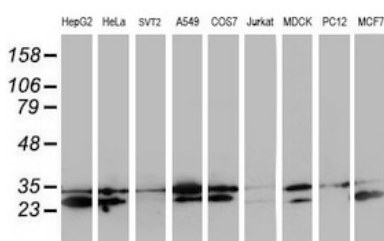
Immunohistochemical staining of paraffin-embedded Carcinoma of Human liver tissue using anti-HDHD1 mouse monoclonal antibody. (Heat-induced epitope retrieval by 10mM citric buffer, pH6.0, 100°C for 10min, AP93866)



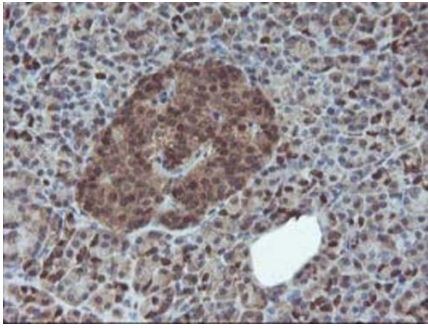
Immunohistochemical staining of paraffin-embedded Human prostate tissue within the normal limits using anti-HDHD1 mouse monoclonal antibody. (Heat-induced epitope retrieval by 10mM citric buffer, pH6.0, 100°C for 10min, AP93866)



Immunohistochemical staining of paraffin-embedded Adenocarcinoma of Human endometrium tissue using anti-HDHD1 mouse monoclonal antibody. (Heat-induced epitope retrieval by 10mM citric buffer, pH6.0, 100°C for 10min, AP93866)



Western blot analysis of extracts (35ug) from 9 different cell lines by using anti-HDHD1 monoclonal antibody.



Immunohistochemical staining of paraffin-embedded Human pancreas tissue within the normal limits using anti-HDHD1 mouse monoclonal antibody. (Heat-induced epitope retrieval by 10mM citric buffer, pH6.0, 100°C for 10min, AP93866)

Please note: All products are 'FOR RESEARCH USE ONLY. NOT FOR USE IN DIAGNOSTIC OR THERAPEUTIC PROCEDURES'.