

# HDHD1 (18L10) Mouse Monoclonal antibody

HDHD1 (18L10) Mouse Monoclonal antibody

Catalog # AP93865

## Product Information

Application	WB, IHC
Primary Accession	<a href="#">Q08623</a>
Reactivity	Human
Clonality	Monoclonal
Calculated MW	25249

## Additional Information

Gene ID	8226
Other Names	Pseudouridine-5'-phosphatase {ECO:0000312   HGNC:HGNC:16818}, 3.1.3.96, Haloacid dehalogenase-like hydrolase domain-containing protein 1, Haloacid dehalogenase-like hydrolase domain-containing protein 1A, Protein GS1, Pseudouridine-5'-monophosphatase, 5'-PsiMPase, PUDP ( <a href="#">HGNC:16818</a> )
Dilution	WB~~1:1000 IHC~~1:100~500
Storage Conditions	-20°C

## Protein Information

Name	PUDP ( <a href="#">HGNC:16818</a> )
Function	Dephosphorylates pseudouridine 5'-phosphate, a potential intermediate in rRNA degradation. Pseudouridine is then excreted intact in urine.

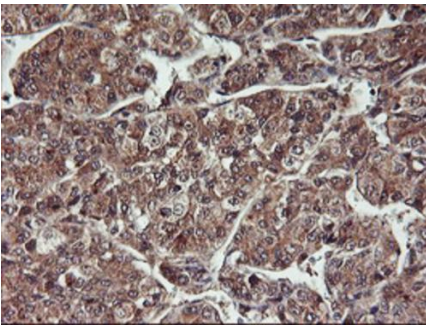
## Background

This gene encodes a member of the haloacid dehalogenase-like (HAD) hydrolase superfamily. The encoded protein has no known biological function. This gene has a pseudogene on chromosome 1. Multiple alternatively spliced transcript variants encoding different isoforms have been identified. [provided by RefSeq]

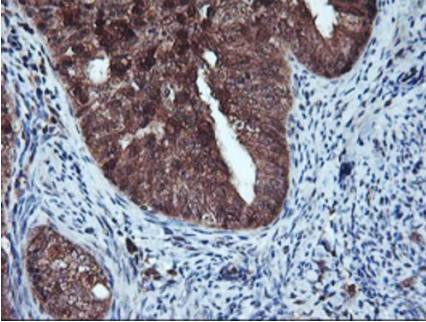
## Images

Immunohistochemical staining of paraffin-embedded Carcinoma of Human liver tissue using anti-HDHD1 mouse monoclonal antibody. (Heat-induced epitope retrieval by 10mM citric buffer, pH6.0, 100°C for 10min,

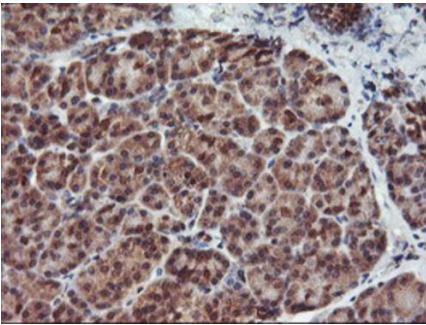
AP93865)



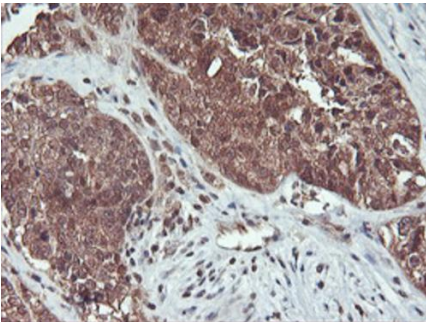
Immunohistochemical staining of paraffin-embedded Adenocarcinoma of Human endometrium tissue using anti-HDHD1 mouse monoclonal antibody. (Heat-induced epitope retrieval by 10mM citric buffer, pH6.0, 100°C for 10min, AP93865)



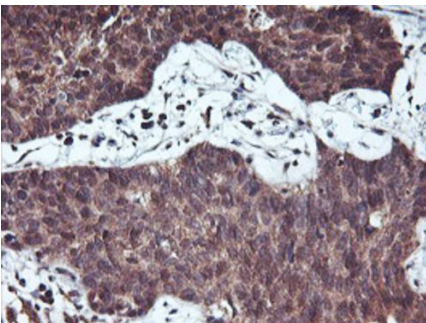
Immunohistochemical staining of paraffin-embedded Human pancreas tissue within the normal limits using anti-HDHD1 mouse monoclonal antibody. (Heat-induced epitope retrieval by 10mM citric buffer, pH6.0, 100°C for 10min, AP93865)



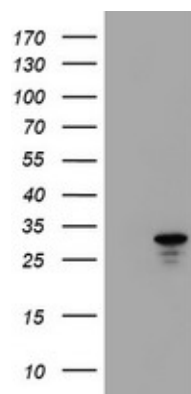
Immunohistochemical staining of paraffin-embedded Adenocarcinoma of Human ovary tissue using anti-HDHD1 mouse monoclonal antibody. (Heat-induced epitope retrieval by 10mM citric buffer, pH6.0, 100°C for 10min, AP93865)



Immunohistochemical staining of paraffin-embedded Carcinoma of Human lung tissue using anti-HDHD1 mouse monoclonal antibody. (Heat-induced epitope retrieval by 10mM citric buffer, pH6.0, 100°C for 10min, AP93865)



HEK293T cells were transfected with the pCMV6-ENTRY control (Left lane) or pCMV6-ENTRY HDHD1 (Right lane) cDNA for 48 hrs and lysed. Equivalent amounts of cell lysates (5 ug per lane) were separated by SDS-PAGE and immunoblotted with anti-HDHD1. Positive lysates (100ug) and (20ug) can be purchased separately from biodragon.



Please note: All products are 'FOR RESEARCH USE ONLY. NOT FOR USE IN DIAGNOSTIC OR THERAPEUTIC PROCEDURES'.