

LELP1 (14H2) Mouse Monoclonal antibody

LELP1 (14H2) Mouse Monoclonal antibody

Catalog # AP93848

Product Information

Application	WB, IHC
Primary Accession	Q5T871
Reactivity	Human
Clonality	Monoclonal
Calculated MW	10697

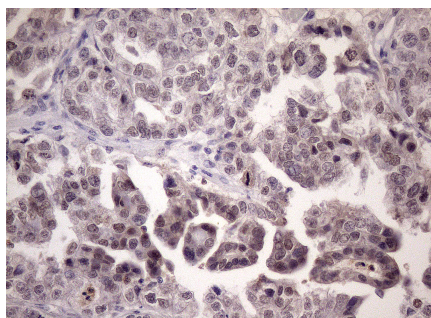
Additional Information

Gene ID	149018
Other Names	Late cornified envelope-like proline-rich protein 1, Novel small proline-rich protein, LELP1
Dilution	WB~~1:1000 IHC~~1:100~500
Storage Conditions	-20°C

Protein Information

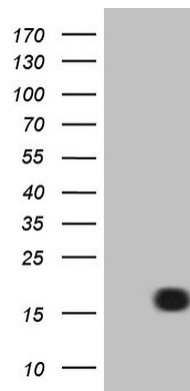
Name	LELP1
------	-------

Images



Immunohistochemical staining of paraffin-embedded Adenocarcinoma of Human ovary tissue using anti-LELP1 mouse monoclonal antibody. (Heat-induced epitope retrieval by 1mM EDTA in 10mM Tris buffer (pH8.5) at 120°C for 3min, AP93848) (1:150)

HEK293T cells were transfected with the pCMV6-ENTRY control (Left lane) or pCMV6-ENTRY LELP1 (Right lane) cDNA for 48 hrs and lysed. Equivalent amounts of cell lysates (5 ug per lane) were separated by SDS-PAGE and immunoblotted with anti-LELP1 (Cat# AP93848)(1:2000).



Positive lysates (100ug) and (20ug) can be purchased separately from biodragon.

Please note: All products are 'FOR RESEARCH USE ONLY. NOT FOR USE IN DIAGNOSTIC OR THERAPEUTIC PROCEDURES'.