

# RIPPLY2 (12Q15) Mouse Monoclonal antibody

RIPPLY2 (12Q15) Mouse Monoclonal antibody

Catalog # AP93847

## Product Information

Application	WB
Primary Accession	<a href="#">Q5TAB7</a>
Reactivity	Human
Clonality	Monoclonal
Calculated MW	13906

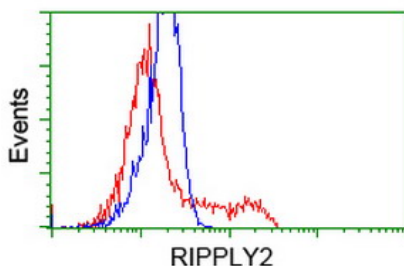
## Additional Information

Gene ID	134701
Other Names	Protein ripply2, RIPPLY2, C6orf159
Dilution	WB~~1:1000
Storage Conditions	-20°C

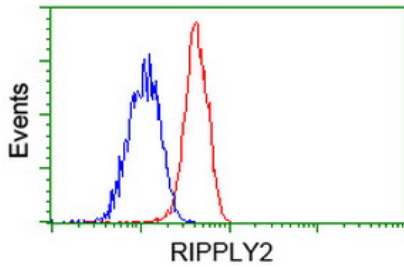
## Protein Information

Name	RIPPLY2
Synonyms	C6orf159
Function	Plays a role in somitogenesis. Required for somite segregation and establishment of rostrocaudal polarity in somites (By similarity).
Cellular Location	Nucleus {ECO:0000250 UniProtKB:Q2WG80}.

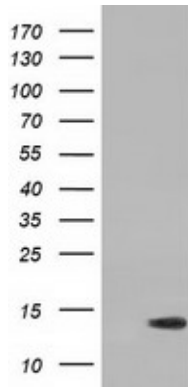
## Images



HEK293T cells transfected with either overexpress plasmid (Red) or empty vector control plasmid (Blue) were immunostained by anti-RIPPLY2 antibody (AP93847), and then analyzed by flow cytometry.



Flow cytometric Analysis of Jurkat cells, using anti-RIPPLY2 antibody (AP93847), (Red), compared to a nonspecific negative control antibody , (Blue).



HEK293T cells were transfected with the pCMV6-ENTRY control (Left lane) or pCMV6-ENTRY RIPPLY2 (Right lane) cDNA for 48 hrs and lysed. Equivalent amounts of cell lysates (5 ug per lane) were separated by SDS-PAGE and immunoblotted with anti-RIPPLY2(Cat# AP93847). Positive lysates (100ug) and (20ug) can be purchased separately from biodragon.

Please note: All products are 'FOR RESEARCH USE ONLY. NOT FOR USE IN DIAGNOSTIC OR THERAPEUTIC PROCEDURES'.