

SPANXN3 (1T8) Mouse Monoclonal antibody

SPANXN3 (1T8) Mouse Monoclonal antibody

Catalog # AP93844

Product Information

Application	WB, IHC
Primary Accession	Q5MJ09
Reactivity	Human
Clonality	Monoclonal
Calculated MW	15580

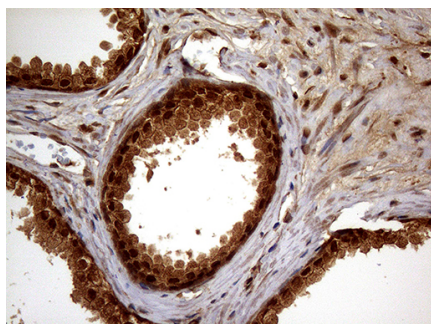
Additional Information

Gene ID	139067
Other Names	Sperm protein associated with the nucleus on the X chromosome N3, Nuclear-associated protein SPAN-Xn3, SPANX-N3, SPANX family member N3, SPANXN3
Dilution	WB~~1:1000 IHC~~1:100~500
Storage Conditions	-20°C

Protein Information

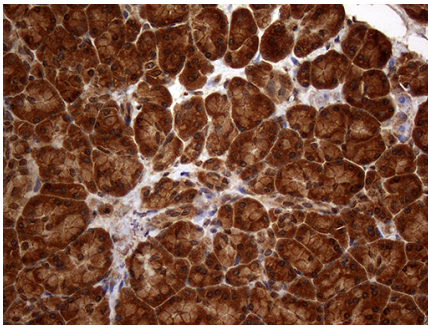
Name	SPANXN3
------	---------

Images

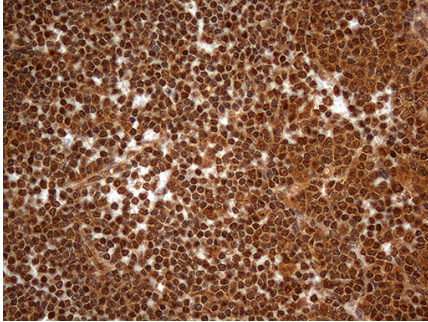


Immunohistochemical staining of paraffin-embedded Human prostate tissue within the normal limits using anti-SPANXN3 mouse monoclonal antibody.
(Heat-induced epitope retrieval by 1mM EDTA in 10mM Tris buffer (pH8.5) at 120°C for 3min, AP93844) (1:2000)

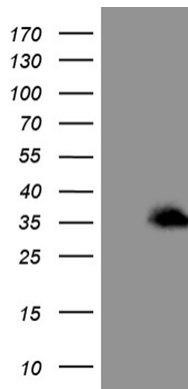
Immunohistochemical staining of paraffin-embedded Human pancreas tissue within the normal limits using anti-SPANXN3 mouse monoclonal antibody.
(Heat-induced epitope retrieval by 1mM EDTA in 10mM



Tris buffer (pH8.5) at 120°C for 3min, AP93844) (1:2000)



Immunohistochemical staining of paraffin-embedded Human lymph node tissue within the normal limits using anti-SPANXN3 mouse monoclonal antibody.
(Heat-induced epitope retrieval by 1mM EDTA in 10mM Tris buffer (pH8.5) at 120°C for 3min, AP93844) (1:2000)



HEK293T cells were transfected with the pCMV6-ENTRY control (Left lane) or pCMV6-ENTRY SPANXN3 (Right lane) cDNA for 48 hrs and lysed. Equivalent amounts of cell lysates (5 ug per lane) were separated by SDS-PAGE and immunoblotted with anti-SPANXN3 (Cat# AP93844)(1:2000). Positive lysates (100ug) and (20ug) can be purchased separately from biodragon.

Please note: All products are 'FOR RESEARCH USE ONLY. NOT FOR USE IN DIAGNOSTIC OR THERAPEUTIC PROCEDURES'.