

TTC32 (9P19) Mouse Monoclonal antibody

TTC32 (9P19) Mouse Monoclonal antibody

Catalog # AP93841

Product Information

Application	WB, IHC, IF
Primary Accession	Q5I0X7
Reactivity	Human
Clonality	Monoclonal
Calculated MW	17296

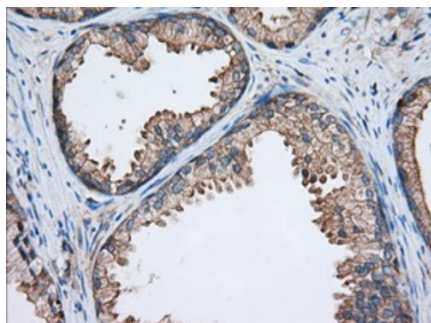
Additional Information

Gene ID	130502
Other Names	Tetratricopeptide repeat protein 32, TPR repeat protein 32, TTC32
Dilution	WB~~1:1000 IHC~~1:100~500 IF~~1:50~200
Storage Conditions	-20°C

Protein Information

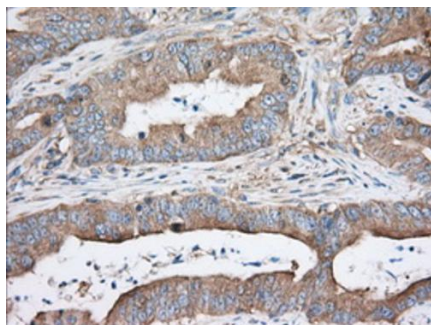
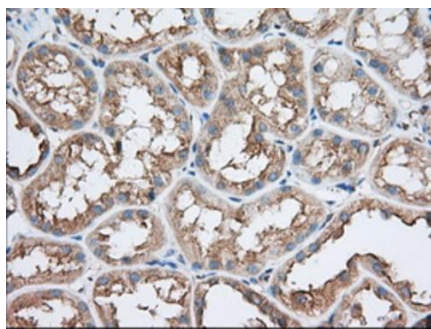
Name	TTC32
------	-------

Images

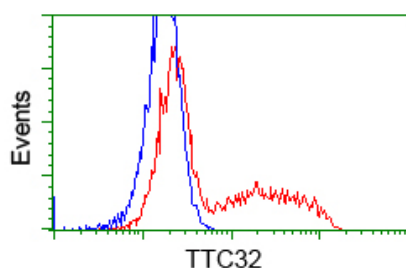


Immunohistochemical staining of paraffin-embedded Human prostate tissue within the normal limits using anti-TTC32 mouse monoclonal antibody. (Heat-induced epitope retrieval by 10mM citric buffer, pH6.0, 100°C for 10min, AP93841, Dilution 1:50)

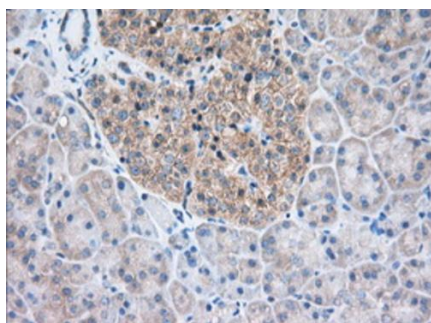
Immunohistochemical staining of paraffin-embedded Human Kidney tissue within the normal limits using anti-TTC32 mouse monoclonal antibody. (Heat-induced epitope retrieval by 10mM citric buffer, pH6.0, 100°C for 10min, AP93841, Dilution 1:50)



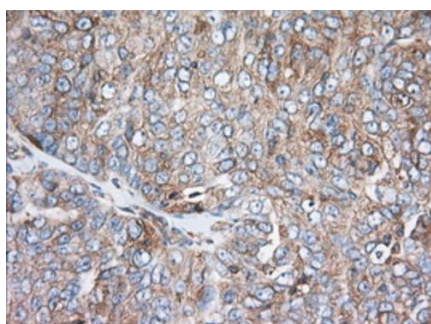
Immunohistochemical staining of paraffin-embedded Adenocarcinoma of Human colon tissue using anti-TTC32 mouse monoclonal antibody. (Heat-induced epitope retrieval by 10mM citric buffer, pH6.0, 100°C for 10min, AP93841, Dilution 1:50)



HEK293T cells transfected with either overexpress plasmid (Red) or empty vector control plasmid (Blue) were immunostained by anti-TTC32 antibody (AP93841), and then analyzed by flow cytometry.

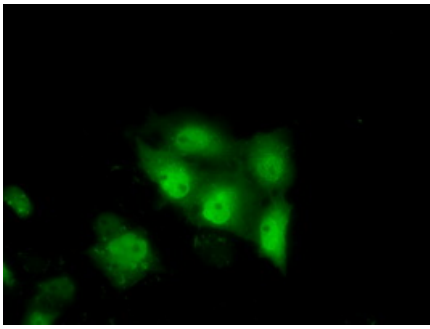


Immunohistochemical staining of paraffin-embedded Human pancreas tissue within the normal limits using anti-TTC32 mouse monoclonal antibody. (Heat-induced epitope retrieval by 10mM citric buffer, pH6.0, 100°C for 10min, AP93841, Dilution 1:50)



Immunohistochemical staining of paraffin-embedded Adenocarcinoma of Human ovary tissue using anti-TTC32 mouse monoclonal antibody. (Heat-induced epitope retrieval by 10mM citric buffer, pH6.0, 100°C for 10min, AP93841, Dilution 1:50)

Anti-TTC32 mouse monoclonal antibody (AP93841) immunofluorescent staining of COS7 cells transiently transfected by pCMV6-ENTRY TTC32 .



Please note: All products are 'FOR RESEARCH USE ONLY. NOT FOR USE IN DIAGNOSTIC OR THERAPEUTIC PROCEDURES'.