

DUPD1 (DUSP27) (18A10) Mouse Monoclonal antibody

DUPD1 (DUSP27) (18A10) Mouse Monoclonal antibody

Catalog # AP93840

Product Information

| | |
|-------------------|------------------------|
| Application | WB, IHC |
| Primary Accession | Q68J44 |
| Reactivity | Human, Mouse |
| Clonality | Monoclonal |
| Calculated MW | 25336 |

Additional Information

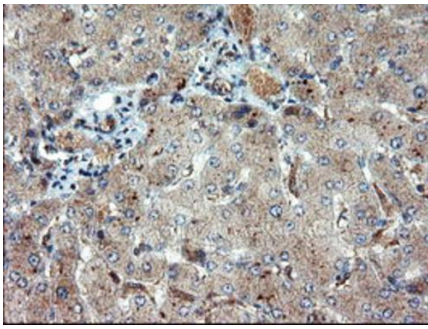
| | |
|--------------------|---|
| Gene ID | 338599 |
| Other Names | Dual specificity phosphatase 29 {ECO:0000312 HGNC:HGNC:23481}, Dual specificity phosphatase 27, Dual specificity phosphatase DUPD1, 3.1.3.16, 3.1.3.48, DUSP29 (HGNC:23481) |
| Dilution | WB~~1:1000 IHC~~1:100~500 |
| Storage Conditions | -20°C |

Protein Information

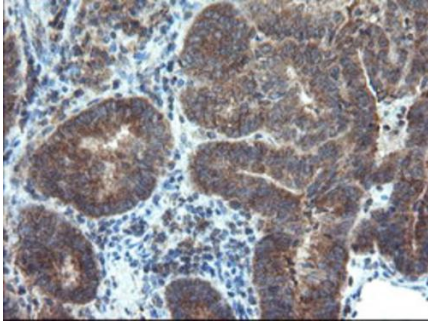
| | |
|-------------------|--|
| Name | DUSP29 (HGNC:23481) |
| Function | Dual specificity phosphatase able to dephosphorylate phosphotyrosine, phosphoserine and phosphothreonine residues within the same substrate, with a preference for phosphotyrosine as a substrate (PubMed: 17498703). Involved in the modulation of intracellular signaling cascades. In skeletal muscle regulates systemic glucose homeostasis by activating, AMPK, an energy sensor protein kinase (By similarity). Affects MAP kinase signaling through modulation of the MAPK1/2 cascade in skeletal muscle promoting muscle cell differentiation, development and atrophy (By similarity). |
| Cellular Location | Cytoplasm. Nucleus {ECO:0000250 UniProtKB:Q8BK84} |

Images

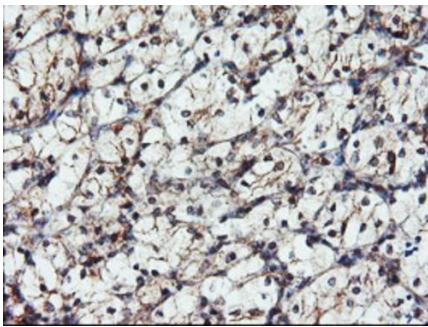
Immunohistochemical staining of paraffin-embedded Human liver tissue within the normal limits using anti-DUPD1 mouse monoclonal antibody. (Heat-induced epitope retrieval by 10mM citric buffer, pH6.0, 100°C for



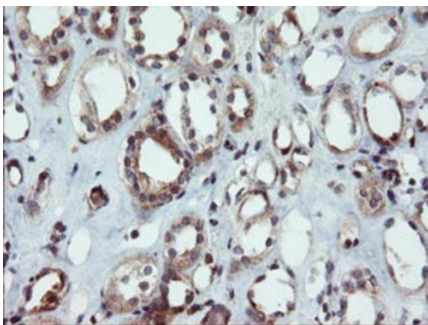
10min, AP93840)



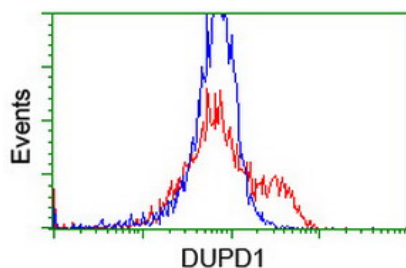
Immunohistochemical staining of paraffin-embedded Adenocarcinoma of Human endometrium tissue using anti-DUPD1 mouse monoclonal antibody. (Heat-induced epitope retrieval by 10mM citric buffer, pH6.0, 100°C for 10min, AP93840)



Immunohistochemical staining of paraffin-embedded Carcinoma of Human kidney tissue using anti-DUPD1 mouse monoclonal antibody. (Heat-induced epitope retrieval by 10mM citric buffer, pH6.0, 100°C for 10min, AP93840)

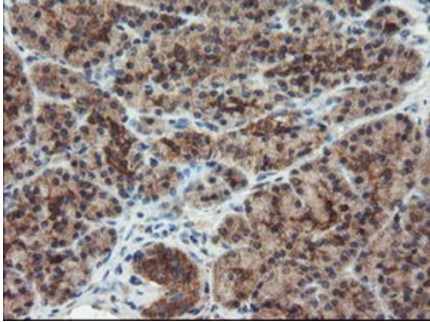
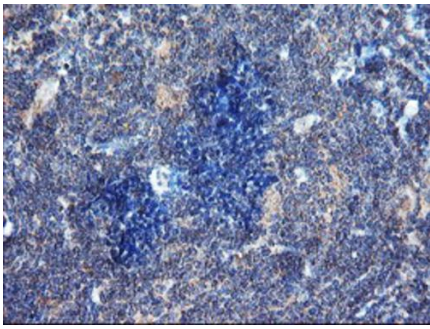


Immunohistochemical staining of paraffin-embedded Human Kidney tissue within the normal limits using anti-DUPD1 mouse monoclonal antibody. (Heat-induced epitope retrieval by 10mM citric buffer, pH6.0, 100°C for 10min, AP93840)



HEK293T cells transfected with either overexpress plasmid (Red) or empty vector control plasmid (Blue) were immunostained by anti-DUPD1 antibody (AP93840), and then analyzed by flow cytometry.

Immunohistochemical staining of paraffin-embedded Human lymphoma tissue using anti-DUPD1 mouse monoclonal antibody. (Heat-induced epitope retrieval by 10mM citric buffer, pH6.0, 100°C for 10min, AP93840)



Immunohistochemical staining of paraffin-embedded Human pancreas tissue within the normal limits using anti-DUPD1 mouse monoclonal antibody. (Heat-induced epitope retrieval by 10mM citric buffer, pH6.0, 100°C for 10min, AP93840)

Please note: All products are 'FOR RESEARCH USE ONLY. NOT FOR USE IN DIAGNOSTIC OR THERAPEUTIC PROCEDURES'.