

Dab1 (12N1) Rabbit Monoclonal Antibody

Dab1 (12N1) Rabbit Monoclonal Antibody
Catalog # AP93833

Product Information

Application	WB
Primary Accession	P97318
Reactivity	Mouse, Rat
Clonality	Monoclonal
Calculated MW	63578

Additional Information

Gene ID	13131
Other Names	Disabled homolog 1, mDab1, Dab1 {ECO:0000303 PubMed:9009273, ECO:0000312 MGI:MGI:108554}
Dilution	WB~~1:1000
Storage Conditions	-20°C

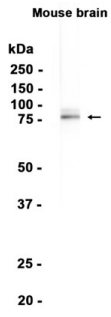
Protein Information

Name	Dab1 {ECO:0000303 PubMed:9009273, ECO:0000312 MGI:MGI:108554}
Function	Signaling adapter of the reelin-mediated signaling pathway, which regulates the migration and differentiation of postmitotic neurons during brain development (PubMed: 12526739 , PubMed: 9009273 , PubMed: 9338784 , PubMed: 9338785). Mediates intracellular transduction of Reelin signaling following reelin (RELN)-binding to its receptor: acts by docking proteins through its phosphotyrosine residues and PID domain (PubMed: 12526739 , PubMed: 9009273 , PubMed: 9338784 , PubMed: 9338785).
Cellular Location	Cytoplasm.
Tissue Location	Expressed mainly in brain (PubMed:9009273, PubMed:9338785). Specifically expressed in cortical neurons (PubMed:9338784, PubMed:9338785).

Background

Adapter molecule functioning in neural development. May regulate SIAH1 activity.

Images



Western blot analysis of extracts from Mouse brain tissue using AP93833 at 1:1000.

Please note: All products are 'FOR RESEARCH USE ONLY. NOT FOR USE IN DIAGNOSTIC OR THERAPEUTIC PROCEDURES'.