

# LAMP1 (7D19) Rabbit Monoclonal Antibody

LAMP1 (7D19) Rabbit Monoclonal Antibody

Catalog # AP93825

## Product Information

Application	WB, IHC, IF, FC, ICC, IP
Primary Accession	<a href="#">P11438</a>
Reactivity	Mouse
Clonality	Monoclonal
Calculated MW	43865

## Additional Information

Gene ID	16783
Other Names	Lysosome-associated membrane glycoprotein 1, LAMP-1, Lysosome-associated membrane protein 1, 120 kDa lysosomal membrane glycoprotein, CD107 antigen-like family member A, LGP-120, Lysosomal membrane glycoprotein A, LGP-A, P2B, CD107a, Lamp1, Lamp-1
Dilution	WB~~1:1000 IHC~~1:100~500 IF~~1:50~200 FC~~1:10~50 ICC~~N/A IP~~N/A
Storage Conditions	-20°C

## Protein Information

Name	Lamp1
Synonyms	Lamp-1
Function	Lysosomal membrane glycoprotein which plays an important role in lysosome biogenesis, lysosomal pH regulation, autophagy and cholesterol homeostasis (PubMed: <a href="#">15121881</a> ). Acts as an important regulator of lysosomal lumen pH regulation by acting as a direct inhibitor of the proton channel TMEM175, facilitating lysosomal acidification for optimal hydrolase activity (By similarity). Also plays an important role in NK-cells cytotoxicity (PubMed: <a href="#">23847195</a> ). Mechanistically, participates in cytotoxic granule movement to the cell surface and perforin trafficking to the lytic granule (By similarity). In addition, protects NK-cells from degranulation-associated damage induced by their own cytotoxic granule content (PubMed: <a href="#">23847195</a> ). Presents carbohydrate ligands to selectins (By similarity). Also implicated in tumor cell metastasis (PubMed: <a href="#">2676155</a> ).
Cellular Location	Lysosome membrane {ECO:0000250 UniProtKB:P11279}; Single-pass type I membrane protein. Endosome membrane {ECO:0000250 UniProtKB:P11279}; Single-pass type I membrane protein. Late endosome membrane {ECO:0000250 UniProtKB:P11279}; Single-pass type I membrane protein. Cell

membrane; Single-pass type I membrane protein. Cytolytic granule membrane; Single-pass type I membrane protein. Note=This protein shuttles between lysosomes, endosomes, and the plasma membrane (By similarity). Colocalizes with OSBPL1A at the late endosome (By similarity). {ECO:0000250|UniProtKB:P05300, ECO:0000250|UniProtKB:P11279}

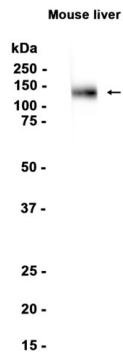
## Background

---

Presents carbohydrate ligands to selectins. Also implicated in tumor cell metastasis.

## Images

---



Western blot analysis of extracts from Mouse liver tissue using AP93825 at 1:1000.

Please note: All products are 'FOR RESEARCH USE ONLY. NOT FOR USE IN DIAGNOSTIC OR THERAPEUTIC PROCEDURES'.