

# GC-C (17B1) Rabbit Monoclonal Antibody

GC-C (17B1) Rabbit Monoclonal Antibody

Catalog # AP93824

## Product Information

Application	WB, IHC
Primary Accession	<a href="#">Q3UWA6</a>
Reactivity	Rat, Mouse
Clonality	Monoclonal
Calculated MW	123232

## Additional Information

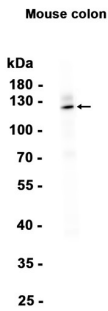
Gene ID	14917
Other Names	Guanylyl cyclase C, GC-C, 4.6.1.2, Heat-stable enterotoxin receptor, STA receptor, Intestinal guanylate cyclase, Gucy2c, Guc2c
Dilution	WB~~1:1000 IHC~~1:100~500
Storage Conditions	-20°C

## Protein Information

Name	Gucy2c
Synonyms	Guc2c
Function	Guanylyl cyclase that catalyzes synthesis of cyclic GMP (cGMP) from GTP.
Cellular Location	Cell membrane {ECO:0000250 UniProtKB:P25092}; Single-pass type I membrane protein {ECO:0000250 UniProtKB:P25092} Endoplasmic reticulum membrane {ECO:0000250 UniProtKB:P25092}; Single- pass type I membrane protein {ECO:0000250 UniProtKB:P25092}. Note=The 145 kDa plasma membrane form of GUCY2C contains sialic acid and galactose residues, while a differentially glycosylated 130 Kda form is a high mannose form that is resident in the endoplasmic reticulum and may serve as the precursor for the cell surface form {ECO:0000250 UniProtKB:P25092}

## Background

Receptor for the E.coli heat-stable enterotoxin (E.coli enterotoxin markedly stimulates the accumulation of cGMP in mammalian cells expressing GC-C). Also activated by the endogenous peptide guanylin (By similarity).



Western blot analysis of extracts from Mouse colon tissue using AP93824 at 1:1000.

Please note: All products are 'FOR RESEARCH USE ONLY. NOT FOR USE IN DIAGNOSTIC OR THERAPEUTIC PROCEDURES'.