

# Tmem27 (14D16) Rabbit Monoclonal Antibody

Tmem27 (14D16) Rabbit Monoclonal Antibody

Catalog # AP93822

## Product Information

Application	WB, IHC, IF, FC, ICC
Primary Accession	<a href="#">Q9HBJ8</a>
Reactivity	Rat, Human, Mouse
Clonality	Monoclonal
Calculated MW	25235

## Additional Information

Gene ID	57393
Other Names	Collectrin, Transmembrane protein 27, CLTRN ( <a href="#">HGNC:29437</a> )
Dilution	WB~~1:1000 IHC~~1:100~500 IF~~1:50~200 FC~~1:10~50 ICC~~N/A
Storage Conditions	-20°C

## Protein Information

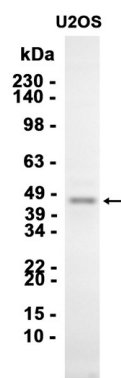
Name	CLTRN ( <a href="#">HGNC:29437</a> )
Function	Plays an important role in amino acid transport by acting as binding partner of amino acid transporters SLC6A18 and SLC6A19, regulating their trafficking on the cell surface and their amino acid transporter activity (By similarity). May also play a role in trafficking of amino acid transporters SLC3A1 and SLC7A9 to the renal cortical cell membrane (By similarity). Regulator of SNARE complex function (PubMed: <a href="#">16330323</a> ). Stimulator of beta cell replication (PubMed: <a href="#">16330323</a> ).
Cellular Location	Cell membrane; Single-pass type I membrane protein. Note=Localizes to the brush border membranes of cells in the proximal tubules of kidney (By similarity). Colocalizes with SLC6A19 in the early proximal S1 tubule (By similarity). {ECO:0000250 UniProtKB:Q9ESG4}
Tissue Location	Kidney; collecting ducts. Pancreas; beta cells of islets.

## Background

This gene encodes a type 1 transmembrane protein that is important for trafficking amino acid transporters to the apical brush border of proximal tubules. The encoded protein binds to amino acid transporters and regulates their expression on the plasma membrane. It also plays a role in controlling insulin exocytosis by

regulating formation of the SNARE (soluble N-ethylmaleimide-sensitive-factor attachment protein receptor) complex in pancreatic beta cells. The extracellular domain of the encoded protein may be cleaved and shed from the plasma membrane specifically in pancreatic beta cells. [provided by RefSeq, Jun 2013]

Images



Western blot analysis of extracts from U2OS cells using AP93822 at 1:1000.

Please note: All products are 'FOR RESEARCH USE ONLY. NOT FOR USE IN DIAGNOSTIC OR THERAPEUTIC PROCEDURES'.