

CD105 (14B19) Rabbit Monoclonal Antibody

CD105 (14B19) Rabbit Monoclonal Antibody

Catalog # AP93819

Product Information

Application	WB, IHC, IF, FC, ICC, IP
Primary Accession	Q63961
Reactivity	Mouse
Clonality	Monoclonal
Calculated MW	70021

Additional Information

Gene ID	13805
Other Names	Endoglin, Cell surface MJ7/18 antigen, CD105, Eng, Edg
Dilution	WB~~1:1000 IHC~~1:100~500 IF~~1:50~200 FC~~1:10~50 ICC~~N/A IP~~N/A
Storage Conditions	-20°C

Protein Information

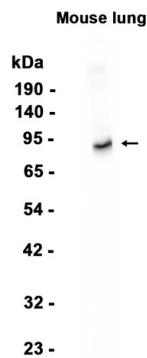
Name	Eng
Synonyms	Edg
Function	Vascular endothelium glycoprotein that plays an important role in the regulation of angiogenesis (PubMed: 10625534). Required for normal structure and integrity of adult vasculature (By similarity). Regulates the migration of vascular endothelial cells (PubMed: 17540773). Required for normal extraembryonic angiogenesis and for embryonic heart development (PubMed: 10625534). May regulate endothelial cell shape changes in response to blood flow, which drive vascular remodeling and establishment of normal vascular morphology during angiogenesis (PubMed: 28530658). May play a role in the binding of endothelial cells to integrins. Acts as a TGF-beta coreceptor and is involved in the TGF-beta/BMP signaling cascade that ultimately leads to the activation of SMAD transcription factors (PubMed: 23300529). Required for GDF2/BMP9 signaling through SMAD1 in endothelial cells and modulates TGFB1 signaling through SMAD3 (By similarity).
Cellular Location	Cell membrane; Single-pass type I membrane protein
Tissue Location	Detected on blood vessels (at protein level) (PubMed:8194490). Detected on adult pulmonary artery, capillaries supporting the heart muscle and lung alveolar capillary endothelial cells (PubMed:10625534). Endoglin is restricted

to endothelial cells in all tissues except bone marrow and is also found in stromal cells within the connective tissue of intestine, stomach, heart, skeletal muscle, uterus, ovary, oviduct, testis and thymus (PubMed:8194490)

Background

Vascular endothelium glycoprotein that plays an important role in the regulation of angiogenesis (PubMed:10625534). Required for normal structure and integrity of adult vasculature (By similarity). Regulates the migration of vascular endothelial cells (PubMed:17540773). Required for normal extraembryonic angiogenesis and for embryonic heart development (PubMed:10625534). May regulate endothelial cell shape changes in response to blood flow, which drive vascular remodeling and establishment of normal vascular morphology during angiogenesis (PubMed:28530658).

Images



Western blot analysis of extracts from Mouse lung tissue using AP93819 at 1:1000.

Please note: All products are 'FOR RESEARCH USE ONLY. NOT FOR USE IN DIAGNOSTIC OR THERAPEUTIC PROCEDURES'.