

# Plasminogen (5V16) Rabbit Monoclonal Antibody

Plasminogen (5V16) Rabbit Monoclonal Antibody

Catalog # AP93818

## Product Information

---

<b>Application</b>	WB, IP
<b>Primary Accession</b>	<a href="#">P20918</a>
<b>Reactivity</b>	Mouse
<b>Clonality</b>	Monoclonal
<b>Calculated MW</b>	90808

## Additional Information

---

<b>Gene ID</b>	18815
<b>Other Names</b>	Plasminogen, 3.4.21.7, Plasmin heavy chain A, Activation peptide, Angiostatin, Plasmin heavy chain A, short form, Plasmin light chain B, Plg
<b>Dilution</b>	WB~~1:1000 IP~~N/A
<b>Storage Conditions</b>	-20°C

## Protein Information

---

<b>Name</b>	Plg
<b>Function</b>	Plasmin dissolves the fibrin of blood clots and acts as a proteolytic factor in a variety of other processes including embryonic development, tissue remodeling, tumor invasion, and inflammation. In ovulation, weakens the walls of the Graafian follicle. It activates the urokinase-type plasminogen activator, collagenases and several complement zymogens, such as C1, C4 and C5. Cleavage of fibronectin and laminin leads to cell detachment and apoptosis. Also cleaves fibrin, thrombospondin and von Willebrand factor. Its role in tissue remodeling and tumor invasion may be modulated by CSPG4. Binds to cells (By similarity).
<b>Cellular Location</b>	Secreted. Note=Locates to the cell surface where it is proteolytically cleaved to produce the active plasmin. Interaction with HRG tethers it to the cell surface (By similarity).

## Background

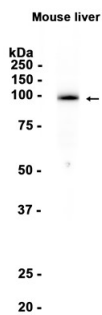
---

Plasmin dissolves the fibrin of blood clots and acts as a proteolytic factor in a variety of other processes including embryonic development, tissue remodeling, tumor invasion, and inflammation. In ovulation, weakens the walls of the Graafian follicle. It activates the urokinase-type plasminogen activator,

collagenases and several complement zymogens, such as C1 and C5. Cleavage of fibronectin and laminin leads to cell detachment and apoptosis. Also cleaves fibrin, thrombospondin and von Willebrand factor. Its role in tissue remodeling and tumor invasion may be modulated by CSPG4. Binds to cells (By similarity).

## Images

---



Western blot analysis of extracts from Mouse liver tissue using AP93818 at 1:1000.

Please note: All products are 'FOR RESEARCH USE ONLY. NOT FOR USE IN DIAGNOSTIC OR THERAPEUTIC PROCEDURES'.