

EVPL (18V7) Rabbit Monoclonal Antibody

EVPL (18V7) Rabbit Monoclonal Antibody

Catalog # AP93815

Product Information

Application	WB, IHC
Primary Accession	Q92817
Reactivity	Human
Clonality	Monoclonal
Calculated MW	231604

Additional Information

Gene ID	2125
Other Names	Envoplakin, 210 kDa cornified envelope precursor protein, 210 kDa paraneoplastic pemphigus antigen, p210, EVPL
Dilution	WB~~1:1000 IHC~~1:100~500
Storage Conditions	-20°C

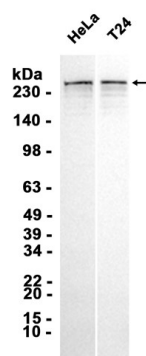
Protein Information

Name	EVPL
Function	Component of the cornified envelope of keratinocytes. May link the cornified envelope to desmosomes and intermediate filaments.
Cellular Location	Cell junction, desmosome. Cornified envelope. Cytoplasm, cytoskeleton. Note=Colocalized with DSP at desmosomes and along intermediate filaments
Tissue Location	Exclusively expressed in stratified squamous epithelia

Background

This gene encodes a member of the plakin family of proteins that forms a component of desmosomes and the epidermal cornified envelope. This gene is located in the tylosis oesophageal cancer locus on chromosome 17q25, and its deletion is associated with both familial and sporadic forms of oesophageal squamous cell carcinoma. Patients suffering from the autoimmune mucocutaneous disorder, paraneoplastic pemphigus, develop antibodies against the encoded protein. [provided by RefSeq, Jul 2016]

Images



Western blot analysis of extracts from HeLa,T24 cells using AP93815 at 1:1000.

Please note: All products are 'FOR RESEARCH USE ONLY. NOT FOR USE IN DIAGNOSTIC OR THERAPEUTIC PROCEDURES'.