

# Ferritin Heavy Chain (14L9) Rabbit Monoclonal Antibody

Ferritin Heavy Chain (14L9) Rabbit Monoclonal Antibody

Catalog # AP93810

## Product Information

---

Application	WB, IHC
Primary Accession	<a href="#">P09528</a>
Reactivity	Rat, Mouse
Clonality	Monoclonal
Calculated MW	21067

## Additional Information

---

Gene ID	14319
Other Names	Ferritin heavy chain, Ferritin H subunit, 1.16.3.1, Ferritin heavy chain, N-terminally processed, Fth1, Fth
Dilution	WB~~1:1000 IHC~~1:100~500
Storage Conditions	-20°C

## Protein Information

---

Name	Fth1
Synonyms	Fth
Function	Stores iron in a soluble, non-toxic, readily available form (By similarity). Important for iron homeostasis (By similarity). Has ferroxidase activity (By similarity). Iron is taken up in the ferrous form and deposited as ferric hydroxides after oxidation (By similarity). Also plays a role in delivery of iron to cells (PubMed: <a href="#">19154717</a> ). Mediates iron uptake in capsule cells of the developing kidney (PubMed: <a href="#">19154717</a> ). Degraded to release iron upon autophagy activation by nutrient starvation (PubMed: <a href="#">25327288</a> ).
Cellular Location	Cytoplasm. Cytoplasmic vesicle, autophagosome Autolysosome

## Background

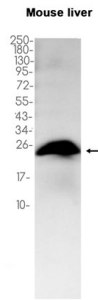
---

Stores iron in a soluble, non-toxic, readily available form

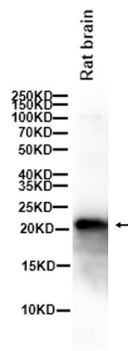
## Images

---

Western blot analysis of extracts from Mouse liver tissue using AP93810 at 1:1000.



Western blot analysis of extracts from Rat brain tissue using AP93810 at 1:1000.



Please note: All products are 'FOR RESEARCH USE ONLY. NOT FOR USE IN DIAGNOSTIC OR THERAPEUTIC PROCEDURES'.