

# Laminin (17O13) Rabbit Monoclonal Antibody

Laminin (17O13) Rabbit Monoclonal Antibody

Catalog # AP93801

## Product Information

---

<b>Application</b>	WB, IHC, FC
<b>Primary Accession</b>	<a href="#">Q9R0B6</a>
<b>Reactivity</b>	Mouse
<b>Clonality</b>	Monoclonal
<b>Calculated MW</b>	172322

## Additional Information

---

<b>Gene ID</b>	23928
<b>Other Names</b>	Laminin subunit gamma-3, Laminin-12 subunit gamma, Laminin-14 subunit gamma, Laminin-15 subunit gamma, Lamc3
<b>Dilution</b>	WB~~1:1000 IHC~~1:100~500 FC~~1:10~50
<b>Storage Conditions</b>	-20°C

## Protein Information

---

<b>Name</b>	Lamc3
<b>Function</b>	Binding to cells via a high affinity receptor, laminin is thought to mediate the attachment, migration and organization of cells into tissues during embryonic development by interacting with other extracellular matrix components.
<b>Cellular Location</b>	Secreted, extracellular space, extracellular matrix, basement membrane
<b>Tissue Location</b>	Strongly expressed in capillaries and arterioles of kidney as well as in interstitial Leydig cells of testis

## Background

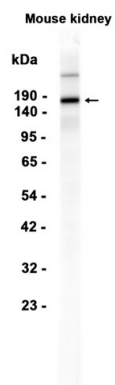
---

Binding to cells via a high affinity receptor, laminin is thought to mediate the attachment, migration and organization of cells into tissues during embryonic development by interacting with other extracellular matrix components

## Images

---

Western blot analysis of extracts from Mouse kidney



tissue using AP93801 at 1:1000.

Please note: All products are 'FOR RESEARCH USE ONLY. NOT FOR USE IN DIAGNOSTIC OR THERAPEUTIC PROCEDURES'.