

# CD8B (13G6) Rabbit Monoclonal Antibody

CD8B (13G6) Rabbit Monoclonal Antibody

Catalog # AP93798

## Product Information

---

Application	WB, IHC, IP
Primary Accession	<a href="#">P10300</a>
Reactivity	Mouse
Clonality	Monoclonal
Calculated MW	24288

## Additional Information

---

Gene ID	12526
Other Names	T-cell surface glycoprotein CD8 beta chain, Lymphocyte antigen 3, T-cell membrane glycoprotein Ly-3, T-cell surface glycoprotein Lyt-3, CD8b, Cd8b, Cd8b1, Ly-3, Lyt-3, Lyt3
Dilution	WB~~1:1000 IHC~~1:100~500 IP~~N/A
Storage Conditions	-20°C

## Protein Information

---

Name	Cd8b
Synonyms	Cd8b1, Ly-3, Lyt-3, Lyt3
Function	<p>Integral membrane glycoprotein that plays an essential role in the immune response and serves multiple functions in responses against both external and internal offenses. In T-cells, functions primarily as a coreceptor for MHC class I molecule:peptide complex. The antigens presented by class I peptides are derived from cytosolic proteins while class II derived from extracellular proteins. Interacts simultaneously with the T-cell receptor (TCR) and the MHC class I proteins presented by antigen presenting cells (APCs). In turn, recruits the Src kinase LCK to the vicinity of the TCR-CD3 complex. A palmitoylation site in the cytoplasmic tail of CD8B chain contributes to partitioning of CD8 into the plasma membrane lipid rafts where signaling proteins are enriched. Once LCK recruited, it initiates different intracellular signaling pathways by phosphorylating various substrates ultimately leading to lymphokine production, motility, adhesion and activation of cytotoxic T-lymphocytes (CTLs). Additionally, plays a critical role in thymic selection of CD8+ T- cells.</p>
Cellular Location	<p>Membrane {ECO:0000250 UniProtKB:P10966}; Single- pass type I membrane protein. Note=Requires the partner CD8A for efficient cell surface expression. The heterodimer CD8A/CD8B localizes to lipid rafts due to CD8B cytoplasmic</p>

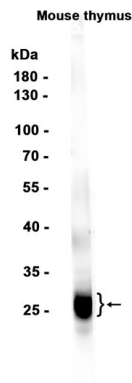
## Background

---

Integral membrane glycoprotein that plays an essential role in the immune response and serves multiple functions in responses against both external and internal offenses

## Images

---



Western blot analysis of extracts from Mouse thymus tissue using AP93798 at 1:1000.

Please note: All products are 'FOR RESEARCH USE ONLY. NOT FOR USE IN DIAGNOSTIC OR THERAPEUTIC PROCEDURES'.