

# MASP1 (19R3) Rabbit Monoclonal Antibody

MASP1 (19R3) Rabbit Monoclonal Antibody

Catalog # AP93794

## Product Information

Application	WB, IF, FC, ICC
Primary Accession	<a href="#">Q8CHN8</a>
Reactivity	Rat, Mouse
Clonality	Monoclonal
Calculated MW	80097

## Additional Information

Gene ID	64023
Other Names	Mannan-binding lectin serine protease 1, 3.4.21.-, Complement factor MASP-3, Complement-activating component of Ra-reactive factor, Mannose-binding lectin-associated serine protease 1, MASP-1, Mannose-binding protein-associated serine protease, Ra-reactive factor serine protease p100, RaRF, Serine protease 5, Mannan-binding lectin serine protease 1 heavy chain, Mannan-binding lectin serine protease 1 light chain, Masp1, Crarf, Masp3
Dilution	WB~~1:1000 IF~~1:50~200 FC~~1:10~50 ICC~~N/A
Storage Conditions	-20°C

## Protein Information

Name	Masp1
Synonyms	Crarf, Masp3
Function	Functions in the lectin pathway of complement, which performs a key role in innate immunity by recognizing pathogens through patterns of sugar moieties and neutralizing them. The lectin pathway is triggered upon binding of mannan-binding lectin (MBL) and ficolins to sugar moieties which leads to activation of the associated proteases MASP1 and MASP2. Functions as an endopeptidase and may activate MASP2 or C2 or directly activate C3 the key component of complement reaction. Isoform 2 may have an inhibitory effect on the activation of the lectin pathway of complement or may cleave IGFBP5. Also plays a role in development.
Cellular Location	Secreted.
Tissue Location	Protein of the plasma which is primarily expressed by liver.

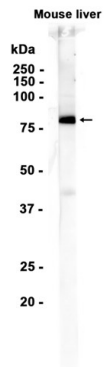
## Background

---

Functions in the lectin pathway of complement, which performs a key role in innate immunity by recognizing pathogens through patterns of sugar moieties and neutralizing them

## Images

---



Western blot analysis of extracts from Mouse liver tissue using AP93794 at 1:1000.

Please note: All products are 'FOR RESEARCH USE ONLY. NOT FOR USE IN DIAGNOSTIC OR THERAPEUTIC PROCEDURES'.