

# Haptoglobin (9A7) Rabbit Monoclonal Antibody

Haptoglobin (9A7) Rabbit Monoclonal Antibody

Catalog # AP93789

## Product Information

---

<b>Application</b>	WB, IHC
<b>Primary Accession</b>	<a href="#">Q61646</a>
<b>Reactivity</b>	Mouse
<b>Clonality</b>	Monoclonal
<b>Calculated MW</b>	38752

## Additional Information

---

<b>Gene ID</b>	15439
<b>Other Names</b>	Haptoglobin, Haptoglobin alpha chain, Haptoglobin beta chain, Hp
<b>Dilution</b>	WB~~1:1000 IHC~~1:100~500
<b>Storage Conditions</b>	-20°C

## Protein Information

---

<b>Name</b>	Hp
<b>Function</b>	As a result of hemolysis, hemoglobin is found to accumulate in the kidney and is secreted in the urine. Haptoglobin captures, and combines with free plasma hemoglobin to allow hepatic recycling of heme iron and to prevent kidney damage. Haptoglobin also acts as an antioxidant, has antibacterial activity and plays a role in modulating many aspects of the acute phase response. Hemoglobin/haptoglobin complexes are rapidly cleared by the macrophage CD163 scavenger receptor expressed on the surface of liver Kupfer cells through an endocytic lysosomal degradation pathway (By similarity).
<b>Cellular Location</b>	Secreted.
<b>Tissue Location</b>	Expressed by the liver and secreted in plasma.

## Background

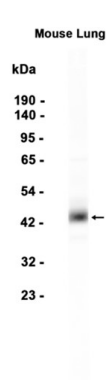
---

This gene encodes a plasma glycoprotein called haptoglobin that binds free hemoglobin. The encoded preproprotein undergoes proteolytic processing to generate alpha and beta subunits that form a disulfide-linked tetrameric protein that plays an important role in the sequestration and clearance of extracorporeal hemoglobin. Mice lacking the encoded protein exhibit stunted development of lymphoid

organs associated with lower counts of mature T and B cells in the blood and secondary lymphoid compartments. [provided by RefSeq, Aug 2016]

Images

---



Western blot analysis of extracts from Mouse lung tissue using AP93789 at 1:1000.

Please note: All products are 'FOR RESEARCH USE ONLY. NOT FOR USE IN DIAGNOSTIC OR THERAPEUTIC PROCEDURES'.