

# TYRP1 (7O11) Rabbit Monoclonal Antibody

TYRP1 (7O11) Rabbit Monoclonal Antibody

Catalog # AP93772

## Product Information

Application	WB, IHC, IF, FC, ICC
Primary Accession	<a href="#">P17643</a> , <a href="#">P07147</a>
Reactivity	Human, Mouse
Clonality	Monoclonal
Calculated MW	60724

## Additional Information

Gene ID	7306
Dilution	WB~~1:1000 IHC~~1:100~500 IF~~1:50~200 FC~~1:10~50 ICC~~N/A
Storage Conditions	-20°C

## Protein Information

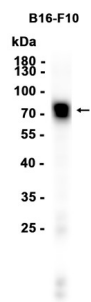
Name	TYRP1 ( <a href="#">HGNC:12450</a> )
Function	Plays a role in melanin biosynthesis (PubMed: <a href="#">16704458</a> , PubMed: <a href="#">22556244</a> , PubMed: <a href="#">23504663</a> ). Catalyzes the oxidation of 5,6-dihydroxyindole-2-carboxylic acid (DHICA) into indole-5,6-quinone-2-carboxylic acid in the presence of bound Cu(2+) ions, but not in the presence of Zn(2+) (PubMed: <a href="#">28661582</a> ). May regulate or influence the type of melanin synthesized (PubMed: <a href="#">16704458</a> , PubMed: <a href="#">22556244</a> ). Also to a lower extent, capable of hydroxylating tyrosine and producing melanin (By similarity).
Cellular Location	Melanosome membrane {ECO:0000250 UniProtKB:P07147}; Single-pass type I membrane protein {ECO:0000250 UniProtKB:P07147}. Note=Located to mature stage III and IV melanosomes and apposed endosomal tubular membranes. Transported to pigmented melanosomes by the BLOC-1 complex. Proper trafficking to melanosome is regulated by SGSM2, ANKRD27, RAB9A, RAB32 and RAB38 {ECO:0000250 UniProtKB:P07147}
Tissue Location	Pigment cells.

## Background

This gene encodes a melanosomal enzyme that belongs to the tyrosinase family and plays an important role in the melanin biosynthetic pathway. Defects in this gene are the cause of rufous oculocutaneous albinism and oculocutaneous albinism type III. [provided by RefSeq, Mar 2009]

## Images

---



Western blot analysis of extracts from B16-F10 cells using AP93772 at 1:5000.

Please note: All products are 'FOR RESEARCH USE ONLY. NOT FOR USE IN DIAGNOSTIC OR THERAPEUTIC PROCEDURES'.