

TPD52 (14S6) Rabbit Monoclonal Antibody

TPD52 (14S6) Rabbit Monoclonal Antibody

Catalog # AP93770

Product Information

Application	WB, IHC, IF, FC, ICC
Primary Accession	P55327 , Q62393
Reactivity	Human, Mouse
Clonality	Monoclonal
Calculated MW	24327

Additional Information

Gene ID	7163
Dilution	WB~~1:1000 IHC~~1:100~500 IF~~1:50~200 FC~~1:10~50 ICC~~N/A
Storage Conditions	-20°C

Protein Information

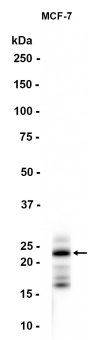
Name	TPD52
Tissue Location	Isoform 2 is expressed in colon, breast, prostate, pancreas and kidney tumor cell lines. Isoform 2 is expressed at high levels in kidney, prostate, brain, small intestine and pancreas, at moderate levels in placenta and colon, at low levels in lung, liver and heart, and at very low levels in spleen, thymus, peripheral mononuclear blood cells, testis and ovary.

Background

Enables calcium ion binding activity and protein homodimerization activity. Involved in B cell differentiation. Located in endoplasmic reticulum and perinuclear region of cytoplasm. [provided by Alliance of Genome Resources, Apr 2022]

Images

Western blot analysis of extracts from MCF-7 cells using AP93770 at 1:1000.



Please note: All products are 'FOR RESEARCH USE ONLY. NOT FOR USE IN DIAGNOSTIC OR THERAPEUTIC PROCEDURES'.