

PON2 (12A8) Rabbit Monoclonal Antibody

PON2 (12A8) Rabbit Monoclonal Antibody

Catalog # AP93755

Product Information

Application	WB, FC, IP
Primary Accession	Q62086 , Q6AXM8
Reactivity	Rat, Mouse
Clonality	Monoclonal
Calculated MW	39617

Additional Information

Gene ID	330260
Dilution	WB~~1:1000 FC~~1:10~50 IP~~N/A
Storage Conditions	-20°C

Protein Information

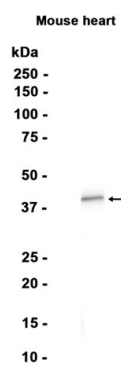
Name	Pon2
Function	Capable of hydrolyzing lactones and a number of aromatic carboxylic acid esters.
Cellular Location	Membrane; Peripheral membrane protein

Background

Predicted to enable arylesterase activity and identical protein binding activity. Predicted to be involved in aromatic compound catabolic process and response to toxic substance. Predicted to be located in several cellular components, including lysosome; mitochondrion; and nucleus. Is expressed in several structures, including alimentary system; brain; cardiovascular system; genitourinary system; and immune system. Human ortholog(s) of this gene implicated in coronary artery disease; familial hypercholesterolemia; neurodegenerative disease (multiple); type 2 diabetes mellitus; and vascular dementia. Orthologous to human PON2 (paraoxonase 2). [provided by Alliance of Genome Resources, Apr 2022]

Images

Western blot analysis of extracts from Mouse heart tissue using AP93755 at 1:1000.



Please note: All products are 'FOR RESEARCH USE ONLY. NOT FOR USE IN DIAGNOSTIC OR THERAPEUTIC PROCEDURES'.