

PIGU (11T18) Rabbit Monoclonal Antibody

PIGU (11T18) Rabbit Monoclonal Antibody

Catalog # AP93753

Product Information

| | |
|--------------------------|--|
| Application | WB, IHC |
| Primary Accession | Q9H490 , Q8K358 , Q8CHJ1 |
| Reactivity | Rat, Human, Mouse |
| Clonality | Monoclonal |
| Calculated MW | 50052 |

Additional Information

| | |
|---------------------------|---------------------------|
| Gene ID | 128869 |
| Dilution | WB~~1:1000 IHC~~1:100~500 |
| Storage Conditions | -20°C |

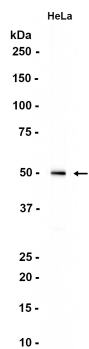
Protein Information

| | |
|--------------------------|--|
| Name | PIGU (HGNC:15791) |
| Synonyms | CDC91L1 |
| Function | Component of the glycosylphosphatidylinositol-anchor (GPI- anchor) transamidase (GPI-T) complex that catalyzes the formation of the linkage between a proprotein and a GPI-anchor and participates in GPI anchored protein biosynthesis (PubMed: 12802054 , PubMed: 31353022 , PubMed: 34576938 , PubMed: 35165458 , PubMed: 35551457 , PubMed: 37684232). Binds the lipid portion of GPI-anchor (PubMed: 37684232). May act as an organizer in the transmembrane layer to recruit other subunits, and thus is essential for assembly of the complex (PubMed: 35165458 , PubMed: 35551457). |
| Cellular Location | Endoplasmic reticulum membrane; Multi-pass membrane protein |

Background

The protein encoded by this gene shares similarity with *Saccharomyces cerevisiae* Cdc91, a predicted integral membrane protein that may function in cell division control. The protein encoded by this gene is the fifth subunit of GPI transamidase that attaches GPI-anchors to proteins. [provided by RefSeq, Jul 2008]

Images



Western blot analysis of extracts from HeLa cells
using AP93753 at 1:1000.

Please note: All products are 'FOR RESEARCH USE ONLY. NOT FOR USE IN DIAGNOSTIC OR THERAPEUTIC PROCEDURES'.