

# PDE10A (8E18) Rabbit Monoclonal Antibody

PDE10A (8E18) Rabbit Monoclonal Antibody

Catalog # AP93751

## Product Information

---

<b>Application</b>	WB, IP
<b>Primary Accession</b>	<a href="#">Q9Y233</a> , <a href="#">Q8CA95</a> , <a href="#">Q9QYJ6</a>
<b>Reactivity</b>	Rat, Human, Mouse
<b>Clonality</b>	Monoclonal
<b>Calculated MW</b>	114946

## Additional Information

---

<b>Gene ID</b>	10846
<b>Dilution</b>	WB~~1:1000 IP~~N/A
<b>Storage Conditions</b>	-20°C

## Protein Information

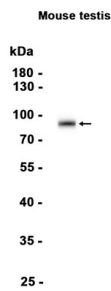
---

<b>Name</b>	PDE10A
<b>Function</b>	Plays a role in signal transduction by regulating the intracellular concentration of cyclic nucleotides (PubMed: <a href="#">10373451</a> , PubMed: <a href="#">10393245</a> , PubMed: <a href="#">16330539</a> , PubMed: <a href="#">17389385</a> , PubMed: <a href="#">27058447</a> ). Can hydrolyze both cAMP and cGMP, but has higher affinity for cAMP and is more efficient with cAMP as substrate (PubMed: <a href="#">10373451</a> , PubMed: <a href="#">10393245</a> , PubMed: <a href="#">17389385</a> , PubMed: <a href="#">27058447</a> ). May play a critical role in regulating cAMP and cGMP levels in the striatum, a region of the brain that contributes to the control of movement and cognition (PubMed: <a href="#">27058447</a> ).
<b>Cellular Location</b>	Cytoplasm, cytosol
<b>Tissue Location</b>	Abundant in the putamen and caudate nucleus regions of brain and testis, moderately expressed in the thyroid gland, pituitary gland, thalamus and cerebellum.

## Background

---

The protein encoded by this gene belongs to the cyclic nucleotide phosphodiesterase family. It plays a role in signal transduction by regulating the intracellular concentration of cyclic nucleotides. This protein can hydrolyze both cAMP and cGMP to the corresponding nucleoside 5' monophosphate, but has higher affinity for cAMP, and is more efficient with cAMP as substrate. Alternatively spliced transcript variants have been described for this gene. [provided by RefSeq, Dec 2011]



Western blot analysis of extracts from Mouse testis tissue using AP93751 at 1:1000.

Please note: All products are 'FOR RESEARCH USE ONLY. NOT FOR USE IN DIAGNOSTIC OR THERAPEUTIC PROCEDURES'.