

KDM3A (8K18) Rabbit Monoclonal Antibody

KDM3A (8K18) Rabbit Monoclonal Antibody

Catalog # AP93745

Product Information

Application	WB, IHC, IF, FC, ICC, IP
Primary Accession	Q9Y4C1 , Q6PCM1 , Q63679
Reactivity	Rat, Human, Mouse
Clonality	Monoclonal
Calculated MW	147341

Additional Information

Gene ID	55818
Dilution	WB~~1:1000 IHC~~1:100~500 IF~~1:50~200 FC~~1:10~50 ICC~~N/A IP~~N/A
Storage Conditions	-20°C

Protein Information

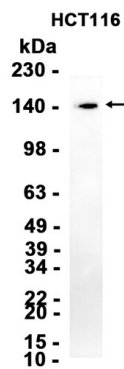
Name	KDM3A
Synonyms	JHDM2A, JMJD1, JMJD1A, KIAA0742, TSGA
Function	<p>Histone demethylase that specifically demethylates 'Lys-9' of histone H3, thereby playing a central role in histone code. Preferentially demethylates mono- and dimethylated H3 'Lys-9' residue, with a preference for dimethylated residue, while it has weak or no activity on trimethylated H3 'Lys-9'. Demethylation of Lys residue generates formaldehyde and succinate. Involved in hormone-dependent transcriptional activation, by participating in recruitment to androgen-receptor target genes, resulting in H3 'Lys-9' demethylation and transcriptional activation. Involved in spermatogenesis by regulating expression of target genes such as PRM1 and TNP1 which are required for packaging and condensation of sperm chromatin. Involved in obesity resistance through regulation of metabolic genes such as PPARG and UCP1.</p>
Cellular Location	Cytoplasm. Nucleus. Note=Nuclear in round spermatids. When spermatids start to elongate, localizes to the cytoplasm where it forms distinct foci which disappear in mature spermatozoa (By similarity).

Background

This gene encodes a zinc finger protein that contains a jumonji domain and may play a role in

hormone-dependent transcriptional activation. Alternative splicing results in multiple transcript variants.
[provided by RefSeq, Apr 2009]

Images



Western blot analysis of extracts from HCT116 cells using AP93745 at 1:1000.

Please note: All products are 'FOR RESEARCH USE ONLY. NOT FOR USE IN DIAGNOSTIC OR THERAPEUTIC PROCEDURES'.