

# ASCC2 (14E10) Rabbit Monoclonal Antibody

ASCC2 (14E10) Rabbit Monoclonal Antibody

Catalog # AP93724

## Product Information

Application	WB
Primary Accession	<a href="#">Q9H1I8</a> , <a href="#">Q91WR3</a>
Reactivity	Rat, Human, Mouse
Clonality	Monoclonal
Calculated MW	86360

## Additional Information

Gene ID	84164
Dilution	WB~~1:1000
Storage Conditions	-20°C

## Protein Information

Name	ASCC2
Synonyms	ASC1P100, RQT3 {ECO:0000303   PubMed:32099}
Function	<p>Ubiquitin-binding protein involved in DNA repair and rescue of stalled ribosomes (PubMed:<a href="#">29144457</a>, PubMed:<a href="#">32099016</a>, PubMed:<a href="#">32579943</a>, PubMed:<a href="#">36302773</a>). Plays a role in DNA damage repair as component of the ASCC complex (PubMed:<a href="#">29144457</a>). Recruits ASCC3 and ALKBH3 to sites of DNA damage by binding to polyubiquitinated proteins that have 'Lys-63'-linked polyubiquitin chains (PubMed:<a href="#">29144457</a>). Part of the ASC-1 complex that enhances NF-kappa-B, SRF and AP1 transactivation (PubMed:<a href="#">12077347</a>). Involved in activation of the ribosome quality control (RQC) pathway, a pathway that degrades nascent peptide chains during problematic translation (PubMed:<a href="#">32099016</a>, PubMed:<a href="#">32579943</a>, PubMed:<a href="#">36302773</a>). Specifically recognizes and binds RPS20/uS10 ubiquitinated by ZNF598, promoting recruitment of the RQT (ribosome quality control trigger) complex on stalled ribosomes, followed by disassembly of stalled ribosomes (PubMed:<a href="#">36302773</a>).</p>
Cellular Location	<p>Nucleus. Nucleus speckle Note=Colocalizes with the spliceosomal components PRPF8 and SNRNP200/BRR2 in nuclear foci when cells have been exposed to alkylating agents that cause DNA damage. Colocalizes with RNF113A and 'Lys-63'-linked polyubiquitinated proteins, ALKBH3 and ASCC3 in nuclear foci when cells have been exposed to alkylating agents that cause DNA damage.</p>

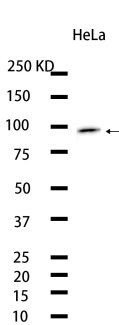
Tissue Location

Ubiquitous..

## Background

Predicted to enable ubiquitin binding activity. Involved in regulation of transcription, DNA-templated; rescue of stalled ribosome; and ribosome-associated ubiquitin-dependent protein catabolic process. Located in nucleus. Part of activating signal cointegrator 1 complex. [provided by Alliance of Genome Resources, Apr 2022]

## Images



Western blot analysis of extracts from HeLa cells using AP93724 at 1:1000.

Please note: All products are 'FOR RESEARCH USE ONLY. NOT FOR USE IN DIAGNOSTIC OR THERAPEUTIC PROCEDURES'.