

AHSG (19C4) Rabbit Monoclonal Antibody

AHSG (19C4) Rabbit Monoclonal Antibody

Catalog # AP93721

Product Information

Application	WB, IHC, IP
Primary Accession	P29699 , P24090
Reactivity	Rat, Mouse
Clonality	Monoclonal
Calculated MW	37326

Additional Information

Gene ID	11625
Dilution	WB~~1:1000 IHC~~1:100~500 IP~~N/A
Storage Conditions	-20°C

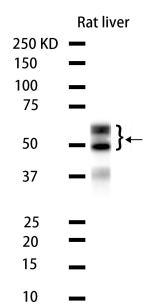
Protein Information

Name	Ahsg
Synonyms	Fetua
Function	Probably involved in differentiation.
Cellular Location	Secreted.
Tissue Location	Liver is the major site of synthesis, but fetuin is also expressed in limb buds and other extrahepatic tissues during development

Background

Predicted to enable endopeptidase inhibitor activity and receptor signaling protein tyrosine kinase inhibitor activity. Involved in negative regulation of bone mineralization. Acts upstream of or within ossification. Predicted to be located in Golgi apparatus; collagen-containing extracellular matrix; and extracellular space. Predicted to be part of protein-containing complex. Predicted to be active in extracellular matrix and extracellular region. Is expressed in several structures, including gut; heart; limb segment; reproductive system; and skeletal musculature. Human ortholog(s) of this gene implicated in alopecia-mental retardation syndrome 1; coronary artery disease; and type 2 diabetes mellitus. Orthologous to human AHSG (alpha 2-HS glycoprotein). [provided by Alliance of Genome Resources, Apr 2022]

Images



Western blot analysis of extracts from Rat liver tissue using AP93721 at 1:1000.

Please note: All products are 'FOR RESEARCH USE ONLY. NOT FOR USE IN DIAGNOSTIC OR THERAPEUTIC PROCEDURES'.