

Tau 4R (16R8) Rabbit Monoclonal Antibody

Tau 4R (16R8) Rabbit Monoclonal Antibody
Catalog # AP93714

Product Information

Application	WB, IHC, IP
Primary Accession	P10636-6 , P10636-7 , P10636-8
Reactivity	Rat, Human, Mouse
Clonality	Monoclonal

Additional Information

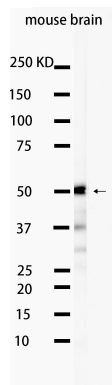
Dilution	WB~~1:1000 IHC~~1:100~500 IP~~N/A
Storage Conditions	-20°C

Protein Information

Background

This gene encodes the microtubule-associated protein tau (MAPT) whose transcript undergoes complex, regulated alternative splicing, giving rise to several mRNA species. MAPT transcripts are differentially expressed in the nervous system, depending on stage of neuronal maturation and neuron type. MAPT gene mutations have been associated with several neurodegenerative disorders such as Alzheimer's disease, Pick's disease, frontotemporal dementia, cortico-basal degeneration and progressive supranuclear palsy. [provided by RefSeq, Jul 2008]

Images



Western blot analysis of extracts from Mouse brain tissue using AP93714 at 1:1000.