

# HLA-C (1S16) Rabbit Monoclonal Antibody

HLA-C (1S16) Rabbit Monoclonal Antibody

Catalog # AP93713

## Product Information

---

Application	WB, IP
Primary Accession	<a href="#">P04222</a>
Reactivity	Human
Clonality	Monoclonal

## Additional Information

---

Dilution	WB~~1:1000 IP~~N/A
Storage Conditions	-20°C

## Protein Information

---

## Background

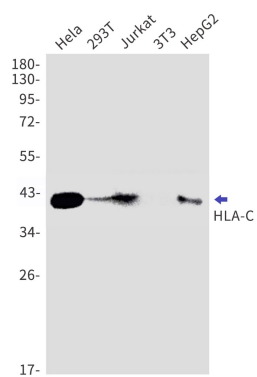
---

HLA-C belongs to the HLA class I heavy chain paralogues. This class I molecule is a heterodimer consisting of a heavy chain and a light chain (beta-2 microglobulin). The heavy chain is anchored in the membrane. Class I molecules play a central role in the immune system by presenting peptides derived from endoplasmic reticulum lumen. They are expressed in nearly all cells. The heavy chain is approximately 45 kDa and its gene contains 8 exons. Exon one encodes the leader peptide, exons 2 and 3 encode the alpha1 and alpha2 domain, which both bind the peptide, exon 4 encodes the alpha3 domain, exon 5 encodes the transmembrane region, and exons 6 and 7 encode the cytoplasmic tail. Polymorphisms within exon 2 and exon 3 are responsible for the peptide binding specificity of each class one molecule. Typing for these polymorphisms is routinely done for bone marrow and kidney transplantation. Over one hundred HLA-C alleles have been described [provided by RefSeq, Jul 2008]

## Images

---

Western blot detection of HLA-C in  
Hela,293T,Jurkat,3T3,HepG2 cell lysates using HLA-C  
antibody(1:1000 diluted).



Please note: All products are 'FOR RESEARCH USE ONLY. NOT FOR USE IN DIAGNOSTIC OR THERAPEUTIC PROCEDURES'.