

GSDMD (4O13) Rabbit Monoclonal Antibody

GSDMD (4O13) Rabbit Monoclonal Antibody

Catalog # AP93712

Product Information

Application	WB, IHC, FC, IP
Primary Accession	Q9D8T2
Reactivity	Rat, Mouse
Clonality	Monoclonal
Calculated MW	53238

Additional Information

Gene ID	69146
Other Names	Gasdermin-D, Gasdermin domain-containing protein 1, Gasdermin-D, N-terminal, GSDMD-NT, mGSDMD-NTD, p30, Gasdermin-D, C-terminal, GSDMD-CT, mGSDMD-CTD, p20, Gasdermin-D, p13, Gasdermin-D, 13 kDa, 13 kDa GSDMD, Gasdermin-D, p40, Gsdmd {ECO:0000303 PubMed:26611636, ECO:0000312 MGI:MGI:1916396}
Dilution	WB~~1:1000 IHC~~1:100~500 FC~~1:10~50 IP~~N/A
Storage Conditions	-20°C

Protein Information

Name	Gsdmd {ECO:0000303 PubMed:26611636, ECO:0000312 MGI:MGI:1916396}
Function	[Gasdermin-D]: Precursor of a pore-forming protein that plays a key role in host defense against pathogen infection and danger signals (PubMed: 26375003 , PubMed: 26375259 , PubMed: 26611636 , PubMed: 27383986 , PubMed: 27385778 , PubMed: 27418190). This form constitutes the precursor of the pore-forming protein: upon cleavage, the released N-terminal moiety (Gasdermin-D, N-terminal) binds to membranes and forms pores, triggering pyroptosis (PubMed: 26375003 , PubMed: 26375259 , PubMed: 26611636 , PubMed: 27383986 , PubMed: 27385778 , PubMed: 27418190).
Cellular Location	[Gasdermin-D]: Cytoplasm, cytosol Inflammasome. Note=In response to a canonical inflammasome stimulus, such as nigericin, recruited to NLRP3 inflammasome with similar kinetics to that of uncleaved CASP1 precursor. [Gasdermin-D, N-terminal]: Cytoplasm, cytosol. Note=(Microbial infection) Upon infection by M.tuberculosis, localization to cell membrane is prevented by M.tuberculosis phosphatase PtpB that catalyzes dephosphorylation of phosphatidylinositol (4,5)-bisphosphate and phosphatidylinositol 4-phosphate, thereby inhibiting the membrane targeting of Gasdermin-D, N-

terminal and subsequent cytokine release and pyroptosis [Gasdermin-D, C-terminal]: Cytoplasm, cytosol

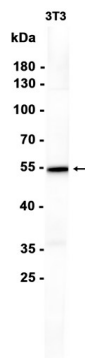
Tissue Location

Highly expressed in brain endothelial cells.

Background

Enables phospholipid binding activity and wide pore channel activity. Involved in several processes, including defense response to bacterium; positive regulation of interleukin-1 beta production; and protein-containing complex assembly. Acts upstream of or within cellular response to extracellular stimulus. Located in cytosol; extracellular space; and plasma membrane. Part of NLRP3 inflammasome complex. Is expressed in several structures, including gut; liver; lung; metanephros; and spleen. Orthologous to human GSDMD (gasdermin D). [provided by Alliance of Genome Resources, Apr 2022]

Images



Western blot analysis of extracts from 3T3 cells using AP93712 at 1:1000.

Please note: All products are 'FOR RESEARCH USE ONLY. NOT FOR USE IN DIAGNOSTIC OR THERAPEUTIC PROCEDURES'.