

# MCM10 Rabbit Polyclonal Antibody

MCM10 Rabbit Polyclonal Antibody

Catalog # AP93711

## Product Information

---

Application	WB, IHC
Primary Accession	<a href="#">Q7L590</a>
Reactivity	Human, Mouse
Clonality	Polyclonal
Calculated MW	98183

## Additional Information

---

Gene ID	55388
Other Names	Protein MCM10 homolog, HsMCM10, MCM10
Dilution	WB~~1:1000 IHC~~1:100~500
Storage Conditions	-20°C

## Protein Information

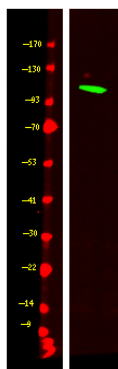
---

Name	MCM10
Function	Acts as a replication initiation factor that brings together the MCM2-7 helicase and the DNA polymerase alpha/primase complex in order to initiate DNA replication. Additionally, plays a role in preventing DNA damage during replication. Key effector of the RBBP6 and ZBTB38-mediated regulation of DNA-replication and common fragile sites stability; acts as a direct target of transcriptional repression by ZBTB38 (PubMed: <a href="#">24726359</a> ).
Cellular Location	Nucleus Note=Colocalizes with ORC2 in nuclei foci. Associated with chromatin in S phase. From early to mid-S phase located in discrete nuclear foci. In early S phase, several hundred foci appeared throughout the nucleus. In mid-S phase, the foci appeared at the nuclear periphery and nucleolar regions. In the late S and G phases localized to nucleoli

## Images

---

Western Blot analysis of Hela cell lysis, using primary antibody at 1:1000 dilution. Secondary antibody was diluted at 1:10000



Please note: All products are 'FOR RESEARCH USE ONLY. NOT FOR USE IN DIAGNOSTIC OR THERAPEUTIC PROCEDURES'.