

Endothelin B Receptor (17V12) Rabbit Monoclonal Antibody

Endothelin B Receptor (17V12) Rabbit Monoclonal Antibody
Catalog # AP93695

Product Information

Application	WB, IP
Primary Accession	P24530
Reactivity	Human
Clonality	Monoclonal
Calculated MW	49644

Additional Information

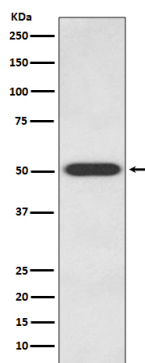
Gene ID	1910
Other Names	Endothelin receptor type B, ET-B, ET-BR, Endothelin receptor non-selective type, EDNRB (HGNC:3180), ETRB
Dilution	WB~~1:1000 IP~~N/A
Storage Conditions	-20°C

Protein Information

Name	EDNRB (HGNC:3180)
Synonyms	ETRB
Function	Non-specific receptor for endothelin 1, 2, and 3. Mediates its action by association with G proteins that activate a phosphatidylinositol-calcium second messenger system.
Cellular Location	Cell membrane; Multi-pass membrane protein. Note=internalized after activation by endothelins.
Tissue Location	Expressed in placental stem villi vessels, but not in cultured placental villi smooth muscle cells

Images

Western blot analysis of Endothelin B Receptor expression in 293T cell lysate.



Please note: All products are 'FOR RESEARCH USE ONLY. NOT FOR USE IN DIAGNOSTIC OR THERAPEUTIC PROCEDURES'.