

CDC34 (18D17) Rabbit Monoclonal Antibody

CDC34 (18D17) Rabbit Monoclonal Antibody

Catalog # AP93691

Product Information

Application	WB, IF, FC, ICC, IP
Primary Accession	P49427
Reactivity	Rat, Human, Mouse
Clonality	Monoclonal
Calculated MW	26737

Additional Information

Gene ID	997
Other Names	Ubiquitin-conjugating enzyme E2 R1, 2.3.2.23, (E3-independent) E2 ubiquitin-conjugating enzyme R1, 2.3.2.24, E2 ubiquitin-conjugating enzyme R1, Ubiquitin-conjugating enzyme E2-32 kDa complementing, Ubiquitin-conjugating enzyme E2-CDC34, Ubiquitin-protein ligase R1, CDC34, UBCH3, UBE2R1
Dilution	WB~~1:1000 IF~~1:50~200 FC~~1:10~50 ICC~~N/A IP~~N/A
Storage Conditions	-20°C

Protein Information

Name	CDC34
Synonyms	UBCH3, UBE2R1
Function	<p>E2 ubiquitin-conjugating enzyme that accepts ubiquitin from an E1 ubiquitin-activating protein, and catalyzes its covalent attachment to other proteins by an E3 ubiquitin-protein ligase complex (PubMed:10329681, PubMed:17588522, PubMed:20061386, PubMed:38326650). In vitro catalyzes 'Lys-48'-linked polyubiquitination (PubMed:22496338). Cooperates with the E2 UBCH5C and the SCF(FBXW11) E3 ligase complex for the polyubiquitination of NFKBIA leading to its subsequent proteasomal degradation (PubMed:10329681, PubMed:10918611, PubMed:17698585). Performs ubiquitin chain elongation building ubiquitin chains from the UBE2D3-primed NFKBIA-linked ubiquitin. UBE2D3 acts as an initiator E2, priming the phosphorylated NFKBIA target at positions 'Lys-21' and/or 'Lys-22' with a monoubiquitin. Cooperates with the SCF(SK2P2) E3 ligase complex to regulate cell proliferation through ubiquitination and degradation of MYBL2 and KIP1 (PubMed:10871850, PubMed:15652359, PubMed:19112177). Involved in ubiquitin conjugation and degradation of CREM isoform ICERIIgamma and ATF15 resulting in abrogation of ICERIIgamma- and ATF5-mediated repression</p>

of cAMP-induced transcription during both meiotic and mitotic cell cycles. Involved in the regulation of the cell cycle G2/M phase through its targeting of the WEE1 kinase for ubiquitination and degradation (PubMed:[19126550](#)). Also involved in the degradation of beta-catenin (PubMed:[12037680](#)). Is target of human herpes virus 1 protein ICP0, leading to ICP0-dependent dynamic interaction with proteasomes (PubMed:[11805320](#), PubMed:[12060736](#)).

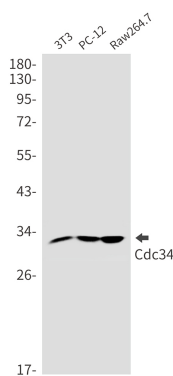
Cellular Location

Cytoplasm. Nucleus. Note=The phosphorylation of the C-terminal tail plays an important role in mediating nuclear localization. Colocalizes with beta-tubulin on mitotic spindles in anaphase

Tissue Location

Expressed in testes during spermatogenesis to regulate repression of cAMP-induced transcription

Images



Western blot detection of Cdc34 in HL-60,U251,U87-MG cell lysates using Cdc34 antibody(1:1000 diluted).

Please note: All products are 'FOR RESEARCH USE ONLY. NOT FOR USE IN DIAGNOSTIC OR THERAPEUTIC PROCEDURES'.