

CDC5 (16S9) Rabbit Monoclonal Antibody

CDC5 (16S9) Rabbit Monoclonal Antibody

Catalog # AP93687

Product Information

Application	WB, IHC, IF, ICC
Primary Accession	Q99459
Reactivity	Rat, Human, Mouse
Clonality	Monoclonal
Calculated MW	92251

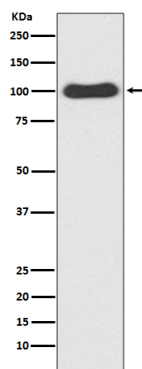
Additional Information

Gene ID	988
Other Names	Cell division cycle 5-like protein, Cdc5-like protein, Pombe cdc5-related protein, CDC5L, KIAA0432, PCDC5RP
Dilution	WB~~1:1000 IHC~~1:100~500 IF~~1:50~200 ICC~~N/A
Storage Conditions	-20°C

Protein Information

Name	CDC5L
Synonyms	KIAA0432, PCDC5RP
Function	DNA-binding protein involved in cell cycle control. May act as a transcription activator. Plays a role in pre-mRNA splicing as core component of precatalytic, catalytic and postcatalytic spliceosomal complexes (PubMed: 11991638 , PubMed: 20176811 , PubMed: 28076346 , PubMed: 28502770 , PubMed: 29301961 , PubMed: 29360106 , PubMed: 29361316 , PubMed: 30705154 , PubMed: 30728453). Component of the PRP19-CDC5L complex that forms an integral part of the spliceosome and is required for activating pre-mRNA splicing. The PRP19-CDC5L complex may also play a role in the response to DNA damage (DDR) (PubMed: 20176811). As a component of the minor spliceosome, involved in the splicing of U12- type introns in pre-mRNAs (Probable).
Cellular Location	Nucleus. Nucleus speckle. Cytoplasm Note=May shuttle between cytoplasm and nucleus
Tissue Location	Ubiquitously expressed in both fetal and adult tissues.

Images



Western blot analysis of CDC5 expression in HeLa cell lysate.

Please note: All products are 'FOR RESEARCH USE ONLY. NOT FOR USE IN DIAGNOSTIC OR THERAPEUTIC PROCEDURES'.