

Cytokeratin 19 (8L9) Rabbit Monoclonal Antibody

Cytokeratin 19 (8L9) Rabbit Monoclonal Antibody

Catalog # AP93657

Product Information

Application	WB, IHC-P, IF, ICC
Primary Accession	P08727
Reactivity	Human, Mouse
Clonality	Monoclonal
Calculated MW	44106

Additional Information

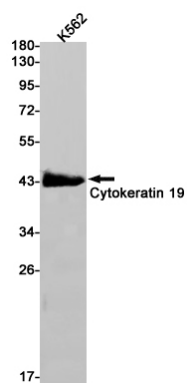
Gene ID	3880
Other Names	Keratin, type I cytoskeletal 19, Cytokeratin-19, CK-19, Keratin-19, K19, KRT19
Dilution	WB~~1:1000 IHC-P~~N/A IF~~1:50~200 ICC~~N/A
Storage Conditions	-20°C

Protein Information

Name	KRT19
Function	Involved in the organization of myofibers. Together with KRT8, helps to link the contractile apparatus to dystrophin at the costameres of striated muscle.
Tissue Location	Expressed in a defined zone of basal keratinocytes in the deep outer root sheath of hair follicles. Also observed in sweat gland and mammary gland ductal and secretory cells, bile ducts, gastrointestinal tract, bladder urothelium, oral epithelia, esophagus, ectocervical epithelium (at protein level). Expressed in epidermal basal cells, in nipple epidermis and a defined region of the hair follicle. Also seen in a subset of vascular wall cells in both the veins and artery of human umbilical cord, and in umbilical cord vascular smooth muscle. Observed in muscle fibers accumulating in the costameres of myoplasm at the sarcolemma in structures that contain dystrophin and spectrin.

Images

Western blot detection of Cytokeratin 19 in K562 cell lysates using Cytokeratin 19 antibody(1:1000 diluted).



Please note: All products are 'FOR RESEARCH USE ONLY. NOT FOR USE IN DIAGNOSTIC OR THERAPEUTIC PROCEDURES'.