

Bim (5Z18) Rabbit Monoclonal Antibody

Bim (5Z18) Rabbit Monoclonal Antibody

Catalog # AP93655

Product Information

Application	WB, IHC-P, IF, ICC, FC, IP
Primary Accession	O43521
Reactivity	Human, Mouse, Rat
Clonality	Monoclonal
Calculated MW	22171

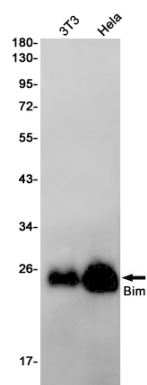
Additional Information

Gene ID	10018
Other Names	Bcl-2-like protein 11, Bcl2-L-11, Bcl2-interacting mediator of cell death, BCL2L11, BIM
Dilution	WB~~1:1000 IHC-P~~N/A IF~~1:50~200 ICC~~N/A FC~~1:10~50 IP~~N/A
Storage Conditions	-20°C

Protein Information

Name	BCL2L11
Synonyms	BIM
Function	Induces apoptosis and anoikis. Isoform BimL is more potent than isoform BimEL. Isoform Bim-alpha1, isoform Bim-alpha2 and isoform Bim-alpha3 induce apoptosis, although less potent than isoform BimEL, isoform BimL and isoform BimS. Isoform Bim-gamma induces apoptosis. Isoform Bim-alpha3 induces apoptosis possibly through a caspase- mediated pathway. Isoform BimAC and isoform BimABC lack the ability to induce apoptosis.
Cellular Location	Endomembrane system; Peripheral membrane protein. Note=Associated with intracytoplasmic membranes. [Isoform BimL]: Mitochondrion. [Isoform Bim-alpha1]: Mitochondrion.
Tissue Location	Isoform BimEL, isoform BimL and isoform BimS are the predominant isoforms and are widely expressed with tissue-specific variation. Isoform Bim-gamma is most abundantly expressed in small intestine and colon, and in lower levels in spleen, prostate, testis, heart, liver and kidney.

Images



Western blot detection of Bim in 3T3,HeLa cell lysates using Bim antibody(1:1000 diluted).

Please note: All products are 'FOR RESEARCH USE ONLY. NOT FOR USE IN DIAGNOSTIC OR THERAPEUTIC PROCEDURES'.