

LRP1 (3Z8) Rabbit Monoclonal Antibody

LRP1 (3Z8) Rabbit Monoclonal Antibody

Catalog # AP93652

Product Information

Application	WB, IHC, IF, FC, ICC, IP
Primary Accession	Q07954
Reactivity	Rat, Human, Mouse
Clonality	Monoclonal
Calculated MW	504606

Additional Information

Gene ID	4035
Other Names	Prolow-density lipoprotein receptor-related protein 1, LRP-1, Alpha-2-macroglobulin receptor, A2MR, Apolipoprotein E receptor, APOER, CD91, Low-density lipoprotein receptor-related protein 1 85 kDa subunit, LRP-85, Low-density lipoprotein receptor-related protein 1 515 kDa subunit, LRP-515, Low-density lipoprotein receptor-related protein 1 intracellular domain, LRPICD, LRP1 (HGNC:6692), A2MR, APR
Dilution	WB~~1:1000 IHC~~1:100~500 IF~~1:50~200 FC~~1:10~50 ICC~~N/A IP~~N/A
Storage Conditions	-20°C

Protein Information

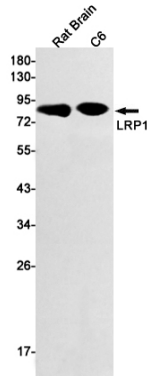
Name	LRP1 (HGNC:6692)
Synonyms	A2MR, APR
Function	Endocytic receptor involved in endocytosis and in phagocytosis of apoptotic cells (PubMed: 11907044 , PubMed: 12713657). Required for early embryonic development (By similarity). Involved in cellular lipid homeostasis. Involved in the plasma clearance of chylomicron remnants and activated LRPAP1 (alpha 2-macroglobulin), as well as the local metabolism of complexes between plasminogen activators and their endogenous inhibitors. Acts as an LRPAP1 alpha-2- macroglobulin receptor (PubMed: 1702392 , PubMed: 26142438). Acts as TAU/MAPT receptor and controls the endocytosis of TAU/MAPT as well as its subsequent spread (PubMed: 32296178). May modulate cellular events, such as APP metabolism, kinase-dependent intracellular signaling, neuronal calcium signaling as well as neurotransmission (PubMed: 12885553). Also acts as a receptor for IGFBP3 to mediate cell growth inhibition (PubMed: 9252371).
Cellular Location	[Low-density lipoprotein receptor-related protein 1 85 kDa subunit]: Cell membrane; Single-pass type I membrane protein Membrane, coated pit

[Low-density lipoprotein receptor-related protein 1 intracellular domain]:
Cytoplasm Nucleus. Note=After cleavage, the intracellular domain (LRPICD) is
detected both in the cytoplasm and in the nucleus.

Tissue Location

Most abundant in liver, brain and lung.

Images



Western blot detection of LRP1 in Rat Brain,C6 cell lysates
using LRP1 antibody(1:1000 diluted).

Please note: All products are 'FOR RESEARCH USE ONLY. NOT FOR USE IN DIAGNOSTIC OR THERAPEUTIC PROCEDURES'.