

# Smc2 (8A19) Rat Monoclonal Antibody

Smc2 (8A19) Rat Monoclonal Antibody

Catalog # AP93643

## Product Information

---

Application	WB
Primary Accession	<a href="#">Q8CG48</a>
Reactivity	Mouse
Clonality	Monoclonal
Calculated MW	134239

## Additional Information

---

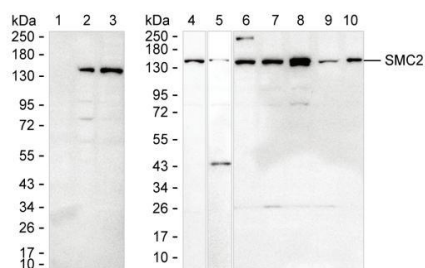
Gene ID	14211
Other Names	Structural maintenance of chromosomes protein 2, SMC protein 2, SMC-2, Chromosome-associated protein E, FGF-inducible protein 16, XCAP-E homolog, Smc2, Cape, Fin16, Smc2l1
Dilution	WB~~1:1000
Storage Conditions	-20°C

## Protein Information

---

Name	Smc2
Synonyms	Cape, Fin16, Smc2l1
Function	Central component of the condensin complex, a complex required for conversion of interphase chromatin into mitotic-like condense chromosomes. The condensin complex probably introduces positive supercoils into relaxed DNA in the presence of type I topoisomerases and converts nicked DNA into positive knotted forms in the presence of type II topoisomerases (By similarity).
Cellular Location	Nucleus. Cytoplasm. Chromosome. Note=In interphase cells, the majority of the condensin complex is found in the cytoplasm, while a minority of the complex is associated with chromatin. A subpopulation of the complex however remains associated with chromosome foci in interphase cells During mitosis, most of the condensin complex is associated with the chromatin. At the onset of prophase, the regulatory subunits of the complex are phosphorylated by CDC2, leading to condensin's association with chromosome arms and to chromosome condensation. Dissociation from chromosomes is observed in late telophase (By similarity)

## Images



Various protein samples were run on 6-18% SDS-PAGE under reducing conditions and blotted onto nitrocellulose membrane. AP93643 at 1 µg/mL was used as the primary antibody and peroxidase conjugated goat anti-rat IgG was used as the secondary antibody. SMC2 band was visualized using ECL Western Blotting Substrate. Lane 1: 15 µg of mouse kidney tissue lysate Lane 2: 15 µg of mouse testis tissue lysate Lane 3: 15 µg of NIH/3T3 lysate Lane 4: 15 µg of Jurkat lysate Lane 5: 15 µg of SK-OV-3 lysate Lane 6: 15 µg of MCF-7 lysate Lane 7: 15 µg of Raji lysate Lane 8: 15 µg of HEK-293 lysate Lane 9: 15 µg of Hep G2 lysate Lane 10: 15 µg of U-251MG lysate Result: AP93643 can detect SMC2 by Western blotting.

Please note: All products are 'FOR RESEARCH USE ONLY. NOT FOR USE IN DIAGNOSTIC OR THERAPEUTIC PROCEDURES'.