

Ctcf1 (1L13) Rat Monoclonal Antibody

Ctcf1 (1L13) Rat Monoclonal Antibody

Catalog # AP93633

Product Information

Application	WB
Primary Accession	A2APF3
Reactivity	Mouse
Clonality	Monoclonal
Calculated MW	73108

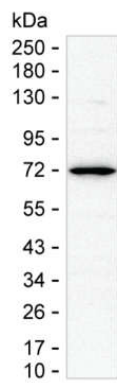
Additional Information

Gene ID	664799
Other Names	Transcriptional repressor CTCFL, Brother of the regulator of imprinted sites, CCCTC-binding factor, CTCF paralog, CTCF-like protein, Ctcf1, Boris
Dilution	WB~~1:1000
Storage Conditions	-20°C

Protein Information

Name	Ctcf1
Synonyms	Boris
Function	Testis-specific DNA binding protein responsible for insulator function, nuclear architecture and transcriptional control, which probably acts by recruiting epigenetic chromatin modifiers. Plays a key role in gene imprinting in male germline, by participating in the establishment of differential methylation at the IGF2/H19 imprinted control region (ICR). Directly binds the unmethylated H19 ICR and recruits the PRMT7 methyltransferase, leading to methylate histone H4 'Arg-3' to form H4R3sme2. This probably leads to recruit de novo DNA methyltransferases at these sites. Seems to act as tumor suppressor. In association with DNMT1 and DNMT3B, involved in activation of BAG1 gene expression by binding to its promoter. Required for dimethylation of H3 lysine 4 (H3K4me2) of MYC and BRCA1 promoters.
Cellular Location	Cytoplasm. Nucleus
Tissue Location	Testis-specific..

Images



15 μ g of mouse testis tissue lysate was run on 6-18% SDS-PAGE under reducing conditions and blotted onto nitrocellulose membrane. AP93633 at 1 μ g/mL was used as the primary antibody and peroxidase conjugated goat anti-rat IgG was used as the secondary antibody. CTCFL band was visualized using ECL Substrate. Result: AP93633 can detect mouse CTCFL by Western blotting.

Please note: All products are 'FOR RESEARCH USE ONLY. NOT FOR USE IN DIAGNOSTIC OR THERAPEUTIC PROCEDURES'.