

Smad2/3 (1L12) Mouse Monoclonal Antibody

Smad2/3 (1L12) Mouse Monoclonal Antibody

Catalog # AP93625

Product Information

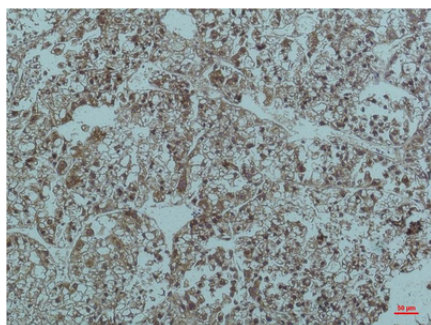
Application	WB, IHC-P
Primary Accession	P84022/Q15796
Reactivity	Rat, Human, Mouse
Clonality	Monoclonal

Additional Information

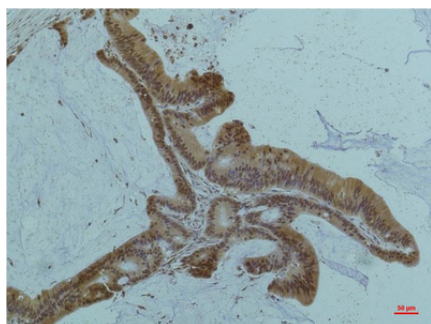
Dilution	WB~~1:1000 IHC-P~~N/A
Storage Conditions	-20°C

Protein Information

Images

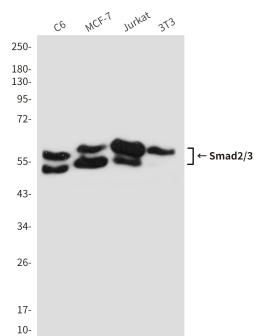


Immunohistochemistry analysis of paraffin-embedded Human Liver tissue using Smad2/3 (6F7) antibody. High-pressure and temperature Sodium Citrate pH 6.0 was used for antigen retrieval.



Immunohistochemical analysis of paraffin-embedded Human tonsils using Smad2/3 (6F7) antibody. High-pressure and temperature Sodium Citrate pH 6.0 was used for antigen retrieval.

Western blot analysis of Smad2/3 (6F7) in C6, MCF-7, Jurkat and 3T3 lysates using Smad2/3 (6F7) antibody



Please note: All products are 'FOR RESEARCH USE ONLY. NOT FOR USE IN DIAGNOSTIC OR THERAPEUTIC PROCEDURES'.