

Rac1/CDC42 (Phospho Ser71) Rabbit Polyclonal Antibody

Rac1/CDC42 (Phospho Ser71) Rabbit Polyclonal Antibody

Catalog # AP93583

Product Information

Application	WB, IHC, E
Primary Accession	P63000/P15153/P60763/P60953
Reactivity	Rat, Human, Mouse
Clonality	Polyclonal

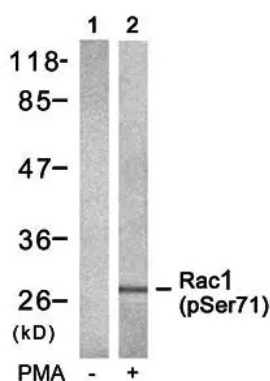
Additional Information

Dilution WB~~1:1000 IHC~~1:100~500 E~~N/A

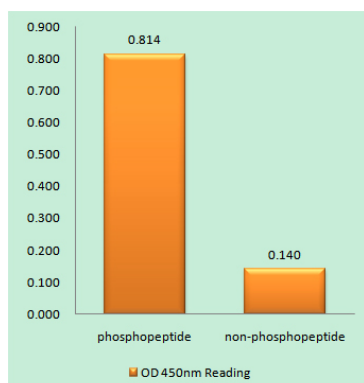
Storage Conditions -20°C

Protein Information

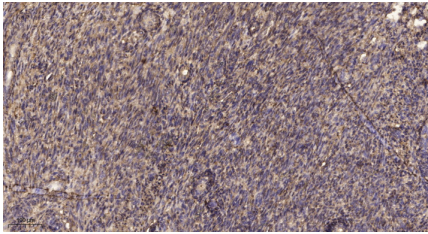
Images



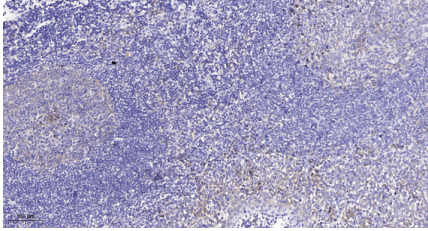
Western blot analysis of Rac1(Phospho-Ser71) antibody in 293 cells lysates, cell treated or untreated with PMA 125ng/ml 30', 4° over night, secondary antibody was diluted at 1:10000, 37° 1 hour.



Enzyme-Linked Immunosorbent Assay (Phospho-ELISA) for Immunogen Phosphopeptide (Phospho-left) and Non-Phosphopeptide (Phospho-right), using Rac1(Phospho-Ser71) antibody



Immunohistochemical analysis of paraffin-embedded human uterus. 1, Antibody was diluted at 1:200(4° overnight). 2, Tris-EDTA,pH9.0 was used for antigen retrieval. 3,Secondary antibody was diluted at 1:200(room temperature, 45min).



Immunohistochemical analysis of paraffin-embedded human tonsil. 1, Antibody was diluted at 1:200(4° overnight). 2, Tris-EDTA,pH9.0 was used for antigen retrieval. 3,Secondary antibody was diluted at 1:200(room temperature, 45min).

Please note: All products are 'FOR RESEARCH USE ONLY. NOT FOR USE IN DIAGNOSTIC OR THERAPEUTIC PROCEDURES'.