

CtBP1/2 (Phospho Ser158/164) Rabbit Polyclonal Antibody

CtBP1/2 (Phospho Ser158/164) Rabbit Polyclonal Antibody
Catalog # AP93582

Product Information

Application	WB, E
Primary Accession	Q13363/P56545
Reactivity	Human, Mouse, Rat
Clonality	Polyclonal

Additional Information

Dilution	WB~~1:1000 E~~N/A
Storage Conditions	-20°C

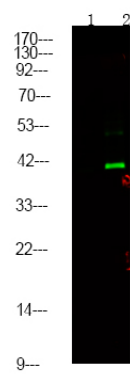
Protein Information

Background

cofactor:NAD. Required for efficient interaction with E1A. Cofactor binding induces a conformation change.,function:Involved in controlling the equilibrium between tubular and stacked structures in the Golgi complex (By similarity). Co-repressor targeting diverse transcription regulators such as GLIS2. Has dehydrogenase activity.,PTM:ADP-ribosylated; when cells are exposed to brefeldin-A (BFA),PTM:Sumoylation on Lys-428 is promoted by the E3 SUMO-protein ligase CBX4.,PTM:The level of phosphorylation appears to be regulated during the cell cycle. Phosphorylated upon DNA damage, probably by ATM or ATR. Phosphorylation by HIPK2 on Ser-422 induces proteasomal degradation.,similarity:Belongs to the D-isomer specific 2-hydroxyacid dehydrogenase family.,subunit:Interacts with the C-terminus of adenovirus E1A protein, ELK3 and CTIP via their consensus motif P-X-[DNS]-L-[STVA]. Can form homodimers or heterodimers of CTBP1 and CTBP2. Interacts with FOXP2, HDAC4, HDAC5 and HDAC9. Interacts with GLIS2 but not GLIS1 or GLIS3 (By similarity). Interacts with FOXP1, HIPK2, PNN and NRIP1. Interacts with ZFH1B and WIZ. Interacts with Epstein-Barr virus EBNA3 and EBNA6.,

Images

Western Blot analysis of 1 HepG2 cell, 2 LPS 100ng/mL
30min treated ,using primary antibody at 1:1000 dilution.
Secondary antibody was diluted at 1:10000



Please note: All products are 'FOR RESEARCH USE ONLY. NOT FOR USE IN DIAGNOSTIC OR THERAPEUTIC PROCEDURES'.