

ASH1L Rabbit Polyclonal Antibody

ASH1L Rabbit Polyclonal Antibody

Catalog # AP93580

Product Information

Application	WB
Primary Accession	Q9NR48
Reactivity	Human, Mouse
Host	Polyclonal, Rabbit,IgG
Clonality	Polyclonal
Calculated MW	332790

Additional Information

Gene ID	55870
Other Names	Histone-lysine N-methyltransferase ASH1L, 2.1.1.359, 2.1.1.367, ASH1-like protein, huASH1, Absent small and homeotic disks protein 1 homolog, Lysine N-methyltransferase 2H, ASH1L, KIAA1420, KMT2H
Dilution	WB~~1:1000
Storage Conditions	-20°C

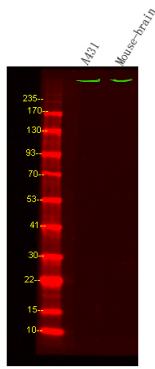
Protein Information

Name	ASH1L
Synonyms	KIAA1420, KMT2H
Function	Histone methyltransferase specifically trimethylating 'Lys- 36' of histone H3 forming H3K36me3 (PubMed: 21239497). Also monomethylates 'Lys-9' of histone H3 (H3K9me1) in vitro (By similarity). The physiological significance of the H3K9me1 activity is unclear (By similarity).
Cellular Location	Nucleus. Cell junction, tight junction. Chromosome. Note=The relevance of tight junction localization is however unclear.
Tissue Location	Widely expressed, with highest level in brain, heart and kidney.

Images

Western Blot analysis of A431 and mouse brain lysis, using primary antibody at 1:1000 dilution. Secondary

antibody was diluted at 1:10000



Please note: All products are 'FOR RESEARCH USE ONLY. NOT FOR USE IN DIAGNOSTIC OR THERAPEUTIC PROCEDURES'.