

Smad2/3 (Acetyl Lys420/378) Rabbit Polyclonal Antibody

Smad2/3 (Acetyl Lys420/378) Rabbit Polyclonal Antibody

Catalog # AP93579

Product Information

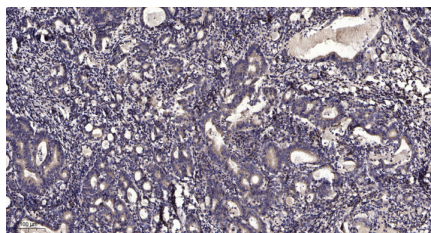
Application	WB, IHC
Primary Accession	Q15796/P84022
Reactivity	Rat, Human, Mouse
Host	Polyclonal, Rabbit, IgG
Clonality	Polyclonal

Additional Information

Dilution	WB~~1:1000 IHC~~1:100~500
Storage Conditions	-20°C

Protein Information

Images



Immunohistochemical analysis of paraffin-embedded human Gastric adenocarcinoma. 1, Antibody was diluted at 1:200(4° overnight). 2, Tris-EDTA,pH9.0 was used for antigen retrieval. 3,Secondary antibody was diluted at 1:200(room temperature, 45min).

Please note: All products are 'FOR RESEARCH USE ONLY. NOT FOR USE IN DIAGNOSTIC OR THERAPEUTIC PROCEDURES'.